



ALPS & METERS

FW25



A Letter from the Founder, Louis Joseph

From an early age, skiing was a winter tradition in my family. Living on the east coast of the United States, I predominantly found myself in the white mountains of the state of New Hampshire. during the 1970s and 1980s. Snow flakes seemed to fall from the sky frequently, accumulating in ample amounts of at least boot high. Alps & Meters was founded to uphold the classic traditions of alpine sport. Ensuring that those traditions endure is also a driving force behind our collective passion and mission.

At the forefront of our business practice is the intention to act responsibly and as a positive and conscious steward of our global stakeholder relationships; those with teammates, vendors, partners, and the environment. In each facet of our organization we recognize that while challenges exist, there are also boundless opportunities for innovation. It is the latter frame of mind that drives our attitude of continuous improvement with the aim of not only upholding but sustaining the traditions which we hold so dear.



We believe in simple, timeless, alpine traditions.

We believe that there is an enduring truth embedded within the beauty of alpine sport... something simple, authentic, and unchanged by the passing of time, the seasons, or technology. Skiing is an uncomplicated and traditional experience shared by generations who are woven tightly together by a familiar fabric of people, places, and memories connected to mountains around the world.

Traditional Alpine Sportswear

Alps & Meters designs garments that fuse high quality natural materials with classic garment construction methods and contemporary technologies to deliver first class products that are tailored, technical, and timeless.



Collezione Alpina Italiana



Powder 8



High West

#DesignedbyTradition



Alpine Sports Club



Ascent

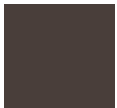


Originals



Collezione Italiana

Famous for its centuries old heritage and timeless commitment to fine Italian tailoring, the Loro Piana mill stand among the worlds elite luxury textile mills and garment technicians. A collaboration bound firmly by an appreciation for traditional methods of making, iconic items from Alps & Meters' outerwear collections receive the benefit of hand made Italian craftsmanship. Meticulous attention paid to elevated fabrics and first class finishing deliver an elite expression of rich alpine sportswear suitable for the chateaus of the Alps and high streets of Paris, Milan, London, or New York.



ALPINE OUTFRIG LORO PIANA

Style # 300014



Desert

NEW

During the early 19th century year and the advent of the first Winter Olympics at the foot of Mont Blanc, Chamonix, France, skiing became a passionate undertaking for the well-do gentleman of the day. In the midst of places such as Chamonix and St. Moritz, winter sportswear was born, adopting influence from the practical military long length coats of the era which gave thoughtful consideration to naturally woolen protective fabrics, top buttoned collar constructions, and easily accessible storage pockets. As skiing became the chosen celebrity activity of the era, the sport quickly influenced and informed the wardrobes of mountain goers throughout continental Europe inciting Vogue Magazine's 1926 issue to state that the garments of alpine sport commanded such high taste that such pieces seen throughout the Alps were "put on in the morning and remained the same as that which one wears until dinner." It is with reference to the traditions and history of such versatile and gentlemanly alpine sportswear that Alps & Meters introduces the Alpine Outfrig Jacket Loro Piana. Built in collaboration with the storied Loro Piana mill and the very finest performance wool fibers in the world, this special Alpine Outfrig Jacket presents a luxury class expression of winter protection and style born from the mountains of Italy.

True to its Forged Performance differentiation, the Alpine Outfrig Jacket Loro Piana offers a unique and unexpected perspective on luxury protection, overall utility, and classic Italian style. Combining Loro Piana's Green Storm System double barrier of wool and, full grain waterproof leather, and ergonomically placed exterior storage pockets, the Alpine Outfrig Jacket Loro Piana offers an elegant European expression which belies a highly advanced complexion of construction. Including PrimaLoft insulation a ski-ready removable hood, exaggerated drop tail, high stove top collar, and internal powder skirt, the Alpine Outfrig Loro Piana is as technical as it is handsome and is aimed to equip the Gentleman Skier with maximum total on-mountain comfort during snow filled days on the mountain.

Cut for Comfort

Inseam, mesh-lined, zippered thigh venting provide ventilation.

Maximum Utility

Right leg pocket for easy access and dry storage.

Traditional Alpine Fit

Back leg zippers close for tapered après-ski profile.

Classic Protection

Eco-friendly Loro Piana Italian Storm System including 100% New Zealand worsted wool shell fabric

Quality & Durability

Full grain, waterproof leather boot panels

Dry & Protected

Interior 10k/10k waterproof membrane and elastic boot gaiters.

Sizes: S, M, L, XL, XXL

WINTER TROUSER LORO PIANA

Style # 300016



Desert

NEW

During the late 19th century, British Tailor John Redfern launched a house of couture which produced the world's first garments designed for sporting activities. The sensibilities of Redfern garnered the patronage of British and European royalty which catapulted the taste and texture of the classic trouser beyond its old military origins to an article of clothing committed to both exceptional comfort and sartorial self-expression. Redfern's position as the luxury sportswear label of the era commanded influence far and wide across the European continent and shaped the 20th century aesthetic of skiwear. During the 1920's and post World War era the convergence of function and fashion as purported by the House of Redfern gave birth to advanced wintersport clothing which was adopted by the skiers of the age. Catering to those well-to-do jet setters and winter sport enthusiasts of the Alps, the proper ski trouser's slim proportions, natural wool material complexion, and panache of herringbone and tweed presentations revealed respect for original features of military mountain performance such as a tapered cut and adjustable suspender kit while also adhering to the high street fashions of Paris, London, and New York. Traditional and contemporary with deference to the tailored craftsmen of winter sport's past, Alps & Meters Alpine Winter Trousers Loro Piana is a luxury product designed with a combination of Loro Piana Italian wool, classic construction techniques, and contemporary technologies. A Forged Performance staple of the Gentleman Skiers wardrobe, the Alpine Winter Trousers is a nostalgic ski pant infused with timeless and technical attributes delivering maximum comfort, warmth, and durability for winter sport recreation.

There is refinement and functional beauty found in the cut & sew complexion of a properly tailored pant. The choice of fabric, materials, and construction techniques, when treated with care, delivers not only performance comfort but a romantic expression of the timeless nature of alpine sport. Made in Italy in collaboration with the famed Loro Piana mill and including a unique mix of protective technologies, the Alpine Winter Trousers Loro Piana represents a powerful combination of both the past and present.

DOWNHILL '27 JACKET

Style # 300015



Desert

NEW

FIT FOR WARMTH

800 fill power Allied Down, internal fitted hand cuffs for additional comfort.

CLASSIC PROTECTION

Helmet compatible hood and high collar for enhanced wind protection.

CUT FOR COMFORT

Underarm venting provides ventilation.

DRY & PROTECTED

Interior 10k/10k waterproof membrane and performance powder skirt.

QUALITY & DURABILITY

100% New Zealand worsted wool shell fabrication

MAXIMUM UTILITY

Zip-secure, flap protected pockets for easy access and dry storage.

Sizes: S, M, L, XL, XXL

It is with deep consideration of the elements that have shaped alpine sport's past, present, and future, that Alps & Meters has created the Downhill '27 Jacket Italiana. Since the first modern downhill race in the United States was staged in 1927, traditional alpine sport clubs have, and continue to remain, authentic bastions of ski and ski racing throughout the world. Dartmouth College's famous Outing Club and the Appalachian Mountain Club of the early 20th century combined a love for winter and the mountains with a desire to slide fast on snow. As racing migrated from its initial North American origins on Mt. Moosilauke, New Hampshire to infect the world's first alpine combined event of slalom and downhill in the Alberg in 1928 passion, style, and technique have fueled skiing's storied history of legends and legendary races. Born in the mountains of Europe and crafted with meticulous Italian craftsmanship and in collaboration with Loro Piana, the Downhill '27 Jacket Italiana commands a luxury sensibility packaged with pure alpine performance & protection.

A unique Forged Performance sportswear garment fusing traditional leatherwork with natural down fill technology, the Downhill '27 Jacket links the passion of skiing's first sports clubs with the excitement, panache, and high style of the gentlemanly racing legacy which they created. A rich boiled wool face fabric, full grain waterproof leather, a warm baffled hood and body, and tailored fit characteristics comprise a product created for the Gentleman Skier whose edges are as sharp as his appearance on mountain and off.

SCHILTHORN JACKET LORO PIANA

Style # 300011



Desert Camo

NEW

Classic Protection

Classic PrimaLoft Gold quilted zippered Loro Piana quilted jacket

Maximum Utility

Zippered hand pockets and knitted collar for comfort and warmth

Quality & Durability

Wool facing outer material for natural protection from the elements.

Sizes: S, M, L, XL, XXL

While skiing's invention and inception is credited to the Scandinavians, unknown to many, is the fact that the modern racing format of the sport and its earliest formalized ski clubs were created by a group of iconoclastic Brits who loved the wind rushing and hair raising euphoria of skiing. Such was alpine sport in continental Europe when awoken to the fervor of down-hilling by Sir Arnold Lunn, a skier, mountaineer, and writer who Founded Britain's the world famous Kandahar Ski Club in 1924. Motivated by a pure downhiller's spirit combined with an attitude of constant experimentation, Lunn ultimately invented the proper slalom race format. Thereafter Lunn's Inferno Race as it would be called, became a a diabolically challenge designed to test the very best skill, will, and speed of racers from the around the world. Today members of the world renowned Kandahar Club continue to host the Murren Inferno Race while regaling the deeds of its competitors much in the same spirit as conducted 100 years ago. A setting of high taste combine with a passion for the outdoors and alpine sporting achievement, the Kandahar Club itself was known as much for its ski crazed members as it was for the first class wardrobes associated with its members on and off-piste. Channeling Lunn's British roots and his alpine sports club's gentlemanly cache, Alps & Meters introduces the Schilthorn Jacket. Named after the peak from which the famed Inferno race begins, this all seasons coverall commands Italian craftsmanship, a richly baffled wool face fabric, and beautiful suede overlays exuding a high taste mixed medium of natural materials. Designed for the Gentleman Sportsman and Including the coat of arms of Murren, Switzerland, the Schilthorn Jacket is an evergreen outdoor piece celebrating of the Kandahar Club's sporting legacy and polished British origins.

**SCHILTHORN
VEST ITALIANA**

Style # 300012



Desert

NEW

First held in January 1928, the inaugural Inferno Race took place when 19 members of Kandahar Ski Club climbed the Schilthorn (2,970m) above Mürren to race down the 2,100 meters to Lauterbrunnen, 14 kilometres away. A journey of almost 10 miles (15 km) and nearly 5 times the length of contemporary downhill Olympic courses, the Inferno was an alpine event whose novelty and legitimate physical and mental obstacles created powerful appeal to the growing racing class cut from the cloth of the Kandahar's expansive blanket of accelerating British influence. High taste, panache, and handsome sensibility describe Alps & Meters Schilthorn Vest. An garment for every season, the Schilthorn Vest commands first class Italian craftsmanship, a richly baffled wool face fabric, with signature suede trim work designed to a high taste mixed medium of natural materials. Designed for the Gentleman Sportsman and Including the Alps & Meters signature mark at left breast, the Schilthorn Vest is an evergreen outerwear piece celebrating of the Kandahar Club's sporting legacy and polished British origins.

Classic Protection

Classic Primaloft Gold quilted zippered quilted vest

Maximum Utility

Zippered hand pockets and knitted collar for comfort and warmth

Quality & Durability

Wool facing outer material and suede elbow patches for natural protection from the elements

Sizes: S, M, L, XL, XXL

**NORDEN KNIT
ITALIANA**

Style # 300010



Desert

NEW

TECHNICALLY KNITTED

Alps & Meters is using the Flair yarn which is part of Botto Giuseppe's Naturalis Fibra collection. The Naturalis Fibra collection sources from the finest Responsible Wool Standard- certified Mongolian cashmere farms and is 100% cashmere, entirely traceable, and pesticide free.

ALPINE TRADITION

Classic knitted Norwegian design

DRY & PROTECTED

Natural cashmere yarns offer moisture wicking and temperature regulation

ERGONOMIC ELBOW KNIT

Ribbed elbow designs engineered for flexibility and durability
Sizes: S, M, L, XL, XXL

From invention in Scandinavia to its inception as a form of winter recreation in the United States, Norwegians gave definitive shape to the sport of skiing in North America. During the early 1900's, Norwegian immigrants of Ishpeming Michigan introduced, as it was then called, skisport to their community. First formed as the Norden Ski Club in 1887, this group of passionate alpinists adopted the namesake of their hometown and changed the name of this nascent alpine sporting body the Ishpeming Ski Club which thereafter then gave official birth to the National Ski Association in 1905. Equipped with crafted and sometimes handmade garments of Norwegian origin which included timeless outerwear of a natural material complexion and shearing insulation, America's first skiers of Ishpeming, Michigan competed in a variety of arenas including ski jumping and thereafter formal downhill all in the comfort of traditional products designed by the forefathers who commanded a no-frills but uncompromising dedication to first class on-mountain performance. It is in the spirit of those pioneering skiers of Ishpeming who established the foundations of the National Ski Association that Alps & Meters introduces the Norden Knit. Crafted with beautiful cashmere-merino fibers and an intricate "American Faire Isle" graphic, the Norden reflects the sturdy stock and rich heritage of the Norwegian immigrants who gave the United States the gift of skiing.

SKI RACE KNIT 1905 ITALIANA

Style #300017



Desert

NEW

Skiing in the United States was delivered into the arms of Americans by Scandinavian immigrants who introduced, taught, and evangelized the sport throughout the country during the late 19th and early 20th centuries. First a hotbed of ski jumping competitions in which first generation Americans tested their verve and nerve in flight and then home to the founding of the National Ski Association in 1905, Ishpeming Michigan was the original proving ground of American downhill prowess. A ski-mad population which sparked and fueled the sport's expansion, it was Ishpeming and the Ishpeming Ski Club itself on which the foundation of United States competitive skiing was to properly organized and ultimately galvanized. Turning passion into world beating competitiveness, the National Ski Association of Ishpeming was to recognized the first Americans to ski under the flag of the United States in international competition in 1928. Forged by a skiing values and a collective need for speed, Ishpeming Michigan is forever linked with the birth of U.S. Skiing and the legendary moments that have followed which have placed American go-for-glory guts on display for the world.

Ishpeming, Michigan and its ski-crazed Scandinavian population of the early 20th century gifted the United States the sport of skiing. A passion fueled amateur Ishpeming Ski Club and its passionate ski jumping and racing competitions lead to the formation of the National Ski Association in 1905. Honoring the origins of American downhill, Alps & Meters is proud to present the Ski Race Knit 1905. Made in the USA and blended with ultra soft cashmere and merino yarns, this classic crew neck racing silhouette is designed with a red-white-&-blue signature expression regaling the alpine heritage of Ishpeming as the birthplace of the United States Ski Team.

TECHNICALLY KNITTED

Alps & Meters is using the Flair yarn which is part of Botto Giuseppe's Naturalis Fibra collection. The Naturalis Fibra collection sources from the finest Responsible Wool Standard- certified Mongolian cashmere farms and is 100% cashmere, entirely traceable, and pesticide free.

ALPINE TRADITION

Classic intarsia knit graphic recognizes Ishpeming, Michigan as the birthplace of United States competitive skiing

DRY & PROTECTED

Natural merino and cashmere yarns offer moisture wicking and temperature regulation

ERGONOMIC ELBOW KNIT

Ribbed elbow designs engineered for flexibility and durability

Sizes: S, M, L, XL, XXL

WINTER FLANNEL LORO PIANA

Style # 300013



Desert

NEW

TECHNICALLY WOVEN

Loro Piana talian merino wool yarns are blended for softness and lasting durability

TRADITIONAL ALPINE FIT

Classic construction and fit designed for total touring comfort

DRY & COMFORTABLE

Merino weave offers moisture wicking properties and optimal temperature regulation

MAXIMUM UTILITY

Left breast chest pocket provides ample storage and includes eyewear chamois for lens cleaning

CLASSIC CONSTRUCTION

Classic Flannel design inspired by traditional alpine sportswear

Sizes: S, M, L, XL, XXL

Skiing in the United States was delivered into the arms of Americans by Scandinavian immigrants who introduced, taught, and evangelized the sport throughout the country during the late 19th and early 20th centuries. First a hotbed of ski jumping competitions in which first generation Americans tested their verve and nerve in flight and then home to the founding of the National Ski Association in 1905, Ishpeming Michigan was the original proving ground of American downhill prowess. A ski-mad population which sparked and fueled the sport's expansion, it was Ishpeming and the Ishpeming Ski Club itself on which the foundation of United States competitive skiing was to properly organized and ultimately galvanized. Turning passion into world beating competitiveness, the National Ski Association of Ishpeming was to recognized the first Americans to ski under the flag of the United States in international competition in 1928. Forged by a skiing values and a collective need for speed, Ishpeming Michigan is forever linked with the birth of U.S. Skiing and the legendary moments that have followed which have placed American go-for-glory guts on display for the world.

Ishpeming, Michigan and its ski-crazed Scandinavian population of the early 20th century gifted the United States the sport of skiing. A passion fueled amateur Ishpeming Ski Club and its passionate ski jumping and racing competitions lead to the formation of the National Ski Association in 1905. Honoring the origins of American downhill, Alps & Meters is proud to present the Ski Race Knit 1905. Made in the USA and blended with ultra soft cashmere and merino yarns, this classic crew neck racing silhouette is designed with a red-white-&-blue signature expression regaling the alpine heritage of Ishpeming as the birthplace of the United States Ski Team.

W's MONARCH

JACKET

Style # 320013



MADE IN ITALY



Desert

NEW

Royal families have been making annual ski trips since mountain resorts became desirable destinations of travel in the early 20th century. Much like hunting and tennis, skiing's dignified character provided a sporting outlet suitable for royalty and their desire to adhere to the upper crust norms of the day. Fueled by a lure of exotic mountain travel and the rise of the paparazzi, skiing quickly became the activity en vogue of high society and participation from many of feminine cultural icons of the 1950's quickly transformed ski slopes into fashionable runways of elegance and sophistication. Grace Kelly, Princess Alexandra of Greece, and Empress Farah of Iran all frequented Europe's classic resorts where their taste and access to the finest fashion and well crafted winter wear helped give shape to a chic alpine sporting style soon adopted in the United States' well-to-do destinations such as Sun Valley, Idaho and Aspen, Colorado. Made in Italy, Alps & Meters' Monarch Jacket Loro Piana is a luxury sportswear garment evoking the classic style of winter's first royalty-come-celebrity whose exotic influence upon ski fashion of the past continues to inform the cache of the sports and its culture even today. Built in collaboration with the storied Loro Piana mill and utilizing the very finest performance wool fibers in the world, this special garment presents a luxurious expression of protection and style designed for winter's royalty.

Made in Italy, the Alps & Meters Monarch Jacket Loro Piana is an authentic and elegant alpine sportswear product marrying the classic sensibilities of skiwear's early methods of making, clean cut lines, and simplicity of purpose. Combining modern protective technologies with the world's best woolen fibers from the famed Loro Piana mill, the Monarch Jacket Loro Piana is an elegant Forged Performance sportswear garment ideally suited to the sophisticated skier. Drawing its origins from the high taste sportswear worn by the royalty and celebrity alike during mid 20th century, the Monarch Jacket Loro Piana provides women the perfect blend of classic styling and modern functionality.

World Class Wool

Eco-friendly Loro Piana Italian Storm System including 100% New Zealand worsted wool

Quality & Durability

Robust protective overlays combining wool & alpaca for comprehensive natural protection

Dry & Protected

80g Prima Loft Gold down with 10k/10k waterproof / breathable membrane

Classic Protection

Helmet compatible hood design and classic front lace closure with face guard for enhanced wind protection.

Maximum Utility

Flap protected, waterproof pass pocket for easy access and dry storage.

Cut for Comfort

Zippered underarm venting provides breathability

Sizes: 0, 2, 4, 6, 8, 10, 12

W's TROUSER

LORO PIANA

Style # 320015



MADE IN ITALY



Desert

NEW

During the 1920's, skiing made the leap from practical mode of winter travel to passionate vehicle of winter recreation. Having adopted many of the wardrobe presentations from the en vogue street fashions of the times, ski skirts remained a core, yet less functional part of the winter wardrobe until the 20's when, in a surge of excitement surrounding alpine sport and the desire for improved mountain utility, trousers were adopted matching the straight lines and trim fitting elements of tailor-made sportswear worn by male members of high society. In a confluence of events, collision of trends, and growing passion for skiing, designers of the times embraced the specialized creation of sportswear and some, including such legends as Coco Chanel, generated a departure from the flowing and embellished fabric presentations of the past in favor of practical garments cut in a streamlined manner allowing for enhanced range of motion and sleek, sophisticated comfort. It is in recognition and appreciation of such tailored sportswear garment innovation that Alps & Meters has designed the Twenties Trousers. Elegant, simple, and bold, the fabric, cut, and fit of this unique alpine sportswear product offers a romantic monochromatic package of Forged Performance protection for the traditional skier who appreciates the integrity and comfort of classic construction and old-world methods of making.

The Alps & Meters Twenties Trousers is an authentic and elegant alpine sportswear product marrying the classic sensibilities of skiwear's early methods of making, clean cut lines, and simplicity of purpose with modern protective technologies. Combining classic trouser construction techniques and fit characteristics, a natural wool blend face fabric, and modern wind proof-water proof membrane, the Twenties Trousers is an elegant Forged Performance style ideally suited to the sophisticated skier. Influenced by the first "tailor-made" skiwear of the early 20th century and its dedication to pure functional design without embellishment, this unique pant evokes an emotional connection to the purity of winter sport and the originality that accompanied an approach to skiwear design which discarded all but the essential elements of total function and comfort.

CLASSIC PROTECTION

100% wool shell with interior waterproof membrane and 40g Primaloft Gold insulation

TRADITIONAL ALPINE FIT

Straight, tapered leg fit evokes timeless sportswear.

CUT FOR COMFORT

Tailored flair design and side zips allow for over-boot wearability.

QUALITY & DURABILITY

Robust protective overlays combining wool & alpaca for comprehensive natural protection

DRY & PROTECTED

Interior waterproof membrane and performance four way stretch moisture wicking lining. Stretch inner waist gaiter provides sleek and comfortable snow seal.

Sizes: XS, S, M, L, XL

**W's STERLING
JACKET LORO
PIANA**

Style # 320014



**ALLIED
FEATHER
+ DOWN**

MADE IN ITALY



Desert **NEW**

FIT FOR WARMTH

800 fill power Allied Down, internal fitted hand cuffs for additional comfort.

CLASSIC PROTECTION

Helmet compatible hood and high collar for enhanced wind protection.

CUT FOR COMFORT

Underarm venting provides ventilation.

DRY & PROTECTED

Interior 10k/10k waterproof membrane and performance powder skirt.

QUALITY & DURABILITY

100% New Zealand worsted wool shell fabrication

MAXIMUM UTILITY

Zip-secure, flap protected pockets for easy access and dry storage.

Sizes: 0, 2, 4, 6, 8, 10, 12

To know Park City, Utah USA is to understand its rags to riches story and the pioneering Women who have been woven in the fabric of this once Western mining town come world class ski resort and breeding ground of some of the world's most legendary female skiers. A destination of rich tradition and early 20th century skiing mythology, some say that as recently as the 1920's, locals in Park City were using underground trains and defunct mining shafts to gain access to the mountain for powder skiing. Many of such alpine sport enthusiasts were the women of Park City who help to shaped the evolution of the town through the ages beginning as rough wild flower which then blossomed into a destination of ionic alpine sporting activity, long-lost cowgirl culture, and global celebrity. This melting pot of snow-sport and glamour harkens back to the advent of the United States' ski resort boom of the early 1960's which drew first class jet setters from around the world to experience the joys of the finest mountain recreation as well as the company of others who shared their winer passion, high taste, and desire for snow-filled camaraderie. Channeling the mid-Western history of Park City and the female skiing celebrities and Olympians that call the Wasatch Mountains home, the Sterling Jacket unites the rustic past and the glamorous present of American alpine sport through a combination of first class natural materials, classic construction techniques, and contemporary technologies. At once elegant and purposeful just like the female pioneers of Park City's mining and skiing roots, the Sterling Jacket is suitable for schussing down Jupiter Bowl by day and Main Street by night.

The Sterling Jacket is a Forged Performance luxury garment designed for the winter sportswoman seeking classic down-filled alpine sportswear ideal for mountain recreation amidst ski resorts the world over. Distinctly designed with an American Western elegance evoking the heritage of Wasatch Mountain Range culture and Park City, Utah USA. The Sterling Jacket combines rustic but elegant natural materials with contemporary technologies to deliver a garment evoking the personality of skiing's first female pioneers whose spirit of alpine passion and celebrity transformed Park City from a rough mining town to iconic ski destination now home to the United States Ski Team.

**W's SCHILTHORN
VEST LORO PIANA**

Style # 320012



PRIMALOFT

MADE IN ITALY



Desert Camo **NEW**

Classic Protection

Classic Primaloft Gold quilted zippered quilted vest in Loro Piana Wool

Maximum Utility

Zippered hand pockets and knitted collar for comfort and warmth

Sizes: XS, S, M, L, XL

Quality & Durability

Wool facing outer material and suede elbow patches for natural protection from the elements

Of polished British origins, many consider the women of the Kandahar Ski Club to have represented one of the first formally organized bodies dedicated to the rising sport of skiing. Designed for the refined alpine sportswoman, Women's Schilthorn Vest Italiana is a four season coverall celebrating of the legacy of Kandahar's original original female membership. Commanding first class Italian craftsmanship, a richly baffled Loro Piana wool face fabric and exquisite trim work, this luxury vest exudes an on & off-piste persona of high taste, European panache, and timeless mountain comfort.

**W's NORDEN
KNIT ITALIANA**

Style # 320009



Desert **NEW**

From invention in Scandinavia to its inception as a form of winter recreation in the United States, Norwegians gave definitive shape to the sport of skiing in North America. During the early 1900's, Norwegian immigrants of Ishpeming Michigan introduced, as it was then called, skisport to their community. First formed as the Norden Ski Club in 1887, this group of passionate alpinists adopted the namesake of their hometown and changed the name of this nascent alpine sporting body to the Ishpeming Ski Club which thereafter then gave official birth to the National Ski Association in 1905. Equipped with crafted and sometimes handmade garments of Norwegian origin which included timeless outerwear of a natural material complexion and shearing insulation, America's first skiers of Ishpeming, Michigan competed in a variety of arenas including ski jumping and thereafter formal downhill all in the comfort of traditional products designed by the forefathers who commanded a no-frills but uncompromising dedication to first class on-mountain performance. It is in the spirit of those pioneering skiers of Ishpeming who established the foundations of the National Ski Association that Alps & Meters introduces the Norden Knit. Crafted with beautiful cashmere-merino fibers and an intricate "American Faire Isle" graphic, the Norden reflects the sturdy stock and rich heritage of the Norwegian immigrants who gave the United States the gift of skiing.

TECHNICALLY KNITTED

Alps & Meters is using the Flair yarn which is part of Botto Giuseppe's Naturalis Fibra collection. The Naturalis Fibra collection sources from the finest Responsible Wool Standard- certified Mongolian cashmere farms and is 100% cashmere, entirely traceable, and pesticide free.

ALPINE TRADITION

3 peak alpine graphic honors the long lineage of American Downhillers

DRY & PROTECTED

Natural merino and cashmere yarns offer moisture wicking and temperature regulation

ERGONOMIC ELBOW KNIT

Ribbed elbow designs engineered for flexibility and durability

Sizes: XS, S, M, L, XL

**W's SKI RACE KNIT
DOWNHILL
ITALIANA**

Style # 320006



Desert **NEW**

TECHNICALLY KNITTED

Alps & Meters is using the Flair yarn which is part of Botto Giuseppe's Naturalis Fibra collection. The Naturalis Fibra collection sources from the finest Responsible Wool Standard- certified Mongolian cashmere farms and is 100% cashmere, entirely traceable, and pesticide free.

FIT FOR WARMTH

High collar and fitted cuffs for additional comfort.

ALPINE TRADITION

Classic sleeve racing stripes inspired by the first female downhillers.

DRY & PROTECTED

Natural yarn body offers moisture wicking and temperature regulation

Sizes: XS, S, M, L, XL

Initially a form of recreation reserved for men, ski racing's romance and elegance came into clear view in 1931 during the first unofficial FIS World Alpine Championships and then again in 1948 during the V Winter Olympics in St. Moritz, Switzerland. 1931 marked Esme MacKinnon's British victories in the downhill and slalom, the first for any woman and a resounding transformation of a sport finally graced and refined by female precision, style, and aplomb. Seventeen years later, inspired by MacKinnon, women compete in their first alpine skiing events of the '48 Winter Olympiad and names such as Hedy Schlunegger of Switzerland, Gretchen Fraser of the United States, and Trude Beiser of Austria, would be awarded the first gold medals in the Downhill, Slalom, and Combined events respectively. Since the pioneering turns of the first half of the 20th century women's elegance, power, and style has imprinted itself on the world of alpine sport. Such values have subsequently demanded unique sportswear presentations of composed of equal parts personality, comfort, and self-expression. Form fitting and offering signature alpine racing stripes down each sleeve, the Ski Race Knit Downhill conveys the story of alpine sports' first female racing personalities, their passion for skiing, and their highly fashionable taste on and off the mountain.

With a point of origin related to proper winter sweaters worn by America's pioneering female skiers, the Women's Ski Race Knit Downhill is a traditional piece of mountain-wear with form fitting characteristics and a Forged Performance material complexion. Combining softly blended cashmere and merino yarns, this luxurious Made-in-the-USA alpine sportswear garment commands a first class expression representing the pure romance of ski racing from both the past and present.

W's **STERLING FLANNEL**
LORO PIANA
Style # 320011



Desert

NEW

Adopted among Western pioneers in the United States, flannel, once the chosen fabric of the working class for its unique combination of durability and warmth permeated American culture while expressing a vibrant spirit of independence that lives on today. During the early 20th century amidst the advent of skiing as a novel means of mountain recreation, workwear's traditional performance garments transitioned seamlessly to use on piste and the category of sportswear was born. Still maintaining those same aspects of comfort which triggered early workwear adoption, flannel shirting's place with the Western U.S. was sealed in towns such as Park City, Utah during alpine sports' resort boom of the 1960s where the woolen fabric and its classic patterns infiltrated life on-piste as much as off when skiing became the status sport of the jet-setting well-to-do which included women of state, actresses, and royalty flocking to the champagne snow of the Wasatch Mountains. With reference to the nostalgic skiing ensembles of the mid-20th century Western U.S., Alps & Meters introduces the Sterling Flannel. Reminiscent of workwear's transition to alpine sportswear and the timeless wardrobes of flannel shirting populating the slopes of Big Cottonwood Canyon which conveyed skiing's then leisurely nature and the tailored appearance of its well-to-do enthusiasts. Featuring a unique Merino-cotton blend woven in a traditional plaid, this posh flannel is a re-imagining of the smart collared shirts and blouses present in many of our favorite ski photographs from the mid 20th century. With an oversized protective presentation, the Sterling Flannel delivers mountain lifestyle comfort and cache for all seasons in the alpine.

A high taste and high comfort interpretation of rustic and traditional flannel silhouettes, the Alps & Meters Sterling Flannel is designed for jet-setting women creating fashionable alpine sportswear ensembles during mountain get-aways. Nostalgic and reminiscent of the timeless flannel shirting populating the slopes of Big Cottonwood Canyon during 1960s, this posh oversized garment reimagines the star smart collared shirts and blouses present in many of our favorite ski photographs from the mid 20th century. With an classic set of shoulder yokes and "dusty" plaid color expression, the Sterling Flannel delivers mountain lifestyle comfort and cache during fireside or off-piste wear occasions.

FIRST CLASS QUALITY AND SUSTAINABILITY
Loro Piana Wool Flannel

OVERSIZED "BOYFRIEND" FIT

Oversized fit and dropped curved hem make for a fashionably warm garment fireside or during apres ski

CLASSIC WESTERN CONSTRUCTION

Classic Flannel design includes traditional breast pockets and left/right shoulder yokes..

DRY & COMFORTABLE

Brushed garment interior provides softness and maximum comfort in both indoor and outdoor settings.

Sizes: XS, S, M, L, XL

W's **STERLING**
LEGGING
ITALIANA
Style # 320010

MADE IN ITALY



Desert

NEW

TAILORED, TRADITIONAL, & TIMELESS
Classic stirrup legging design and leather racing stripe evoke the feminine heritage of alpine sport

FASHIONED FOR COMFORT
Form-fitting cut marries the legging to the body for close quality comfort.

DRY & PROTECTED
3-ply merino wool blend provides comfort, protection, and a natural thermal regulation

A destination of rich tradition and early 20th century skiing mythology, Park City Utah USA has been a center of gravitas for some of the world's most legendary female skiers and, as such, has become a destination of iconic alpine sporting activity, long-lost cowgirl culture, and global celebrity. Now the melting pot of both champagne and champagne powder, Park City attracts ski and apres' ski enthusiasts alike who are eager to regale in both the tradition and glamour of this mining town come tinseltown. Designed for the skiing jet setter descending on the famed Sundance Film Festival and with interest to frequent the catwalk of Park City's famed Main Street, the Sterling Legging has been crafted with an high waisted and straight-legged stirrup design reflecting the town's winter mode of fashion during Park City's skiing renaissance of the mid 20th century. Elegant, simple, and nostalgic, the cut and fit of this 3-ply merino wool fabric with leather hip racing stripe make this stylish pant a wardrobe essential during pre-ski brunch, apres ski, or high taste evening occasions under the mountain sky.

The Sterling Legging is cut in a classic high waisted straight leg stirrup silhouette reflecting the elegant mode of fashion during skiing's boom of the early 20th century. A 3-ply merino woolen blend provides form fitting comfort and modest protection for pre-ski brunch, apres' ski, and smart evening social settings.



Powder 8

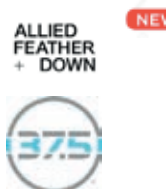
While the early 21st century of skiing in the United States are littered with stories of historic sports clubs as well as jumping and downhill competitions, the 1970's brought saw the longstanding craving for on-piste carving change to an out-of-bounds attitude awakened by the sensation of floating through air; powder skiing was born. Soulful like the era in which it was born, powder skiing is thought to have freed skiers from the confines and shackles of racing gates and gated resort territories. Free in every essence of the word, and acting as the prelude to the extreme skiing movement of the 1980's, powder skiing was an untamed expression of sliding on snow that delivered an out of body experience for those willing to rise with the first chair while seeking stashes of new fallen snow beyond the comfort of inbound terrain. At first informal and acknowledge only by the wind grins of joy associated with powder hounds of the era, the first formal showcase of powder skiing was organized within the pioneering mecca of Jackson Hole, Wyoming USA in 1975. Within Jackson's Cody Bowl lay an untracked canvas of snow and standing ready to paint their turns on this stage of first Powder 8 Grant Nationals stood teams of 2 prepared to demonstrate their powder skiing prowess by linking perfectly synchronization figure 8s down the bowl's untouched face. Such as it was, during the inaugural event legendary skier Pepi Stiegler and his partner Peter Habeler displayed a dream-like line of soulful tandem turns that claimed first place and bragging rights to the title of the best powder skiers in the USA. Today, formal or informal, powder skiing remains a true tradition of alpine of sport and one whose celebration is manifest within Alps & Meters Powder 8 Collection.





CODY POWDER 8'S JACKET

Style # 100062



Navy/Green



Blue/Navy

DRY AND PROTECTED

Recycled polyester
4 way stretch water proof shell fabric 10K / 15K with 37.5 branded technology.
Innovative recycled waterproof 10K / 15K stretch corduroy overlays
800 fill goose down

MAXIMUM UTILITY

Removable helmet compatible hood

Sizes: S, M, L, XL, XXL

Originally freewheeling and full of unbridled speed, the ski racing of the early 20th century ultimately come under the auspices of governing bodies such as the newly formed FIS and, within the United States, the National Ski Association of 1905. Previously confined to groomed & gated terrain a spark of skiing's original rebellious & passionate spirit arose during the 1970's with a seismic shift from on-piste to off-piste attitudes of downhillers within the United States. Having over corrected in favor of roped boundary defined terrain, resort owners of the post-1950's era inadvertently created an uprising that would create the next great wave of alpine culture: powder skiing. At first ignited by just a few brave renegades, the flames of powder skiing were fanned into a combustible explosion of out of bounds activity by the freedom fueled rebellion, rediscovered addiction, and gravity defying experience of floating through snow. As the joy of powder skiing spread, powder hounds, first jointed together by a buddy system centered upon out-of-bounds safety, soon formed synchronized skiing tandems that came to arc co-joined turns in a soulful rhythm that harkened back to the simple origins of skiing itself. Revisiting the retro-athletic expression and vibrancy of the Powder 8 era, Alps & Meters introduces the Cody Powder 8 Puffer. Designed with of 85% recycled fibers and including traceable 800 filled Allied Down as well as unique 37.5 Degree temperature regulating fabric, technology this full zip jacket combines the colorful retro-athletic persona of Powder 8 skiing's past with contemporary protection aimed at maximizing protective alpine performance.

The Alps & Meters Cody Powder 8 Puffer channels the soulful spirit of fun & freedom expressed during the powder skiing boom of the 70's & 80's. Designed with a heritage-athletic expression and vibrant palette therein, this high performance outerwear product is responsibly built with 85% recycled fabric and commands robust proactive technologies including 800 down-fill power and temperature regulating membranes managing heat & moisture during off-piste powder skiing adventures. Revisiting the tradition of powder skiing's iconic past along with Alps & Meters built-to-last standards of construction & finishing, the Powder 8 Jacket is ideal for the Gentleman Skier seeking classic quality combined with stylish alpine sporting cues & color.

POWDER 8 TROUSER

Style # 100063



Navy



Blue

DRY AND PROTECTED

Recycled polyester
4 way stretch water proof shell fabric 10K / 15K with 37.5 branded technology.
Innovative recycled waterproof 10K / 15K stretch corduroy overlays
Primaloft Gold 40g

Sizes: S, M, L, XL, XXL

First adopted from the high street fashions of the day, the ski enthusiast of the late 19th and early 20th centuries wore trousers cut from local fibers which were shaped by the tastes of the day. Often crafted of wool with classic tailored accoutrements, alpinists at the advent and forefront of alpine sport wore such daily garb to the mountain in what was considered proper attire attune with skiing's elevated sporting status. Such wardrobes continued to populate the slopes throughout the 1950's and 1960's when general conformity drove the social norms of alpine sport. However, such regulation was shattered in the 70's when backlash arose at the restrictive nature of resort skiing confining the free spirit of skiing's original mantra. Ducking ropes became the norm for alpinists seeking both elevation and untracked powder leading to a united & rebellious period that was the precursor of the Extreme era to come. Carving was replaced with floating and once subdued kits exploded with color and attitude reflecting the newfound joy of of snow-filled off-posted adventure. Designed to celebrate the advent of powder skiing in the United States, the Alps & Meters Powder 8 Trousers is crafted of 85% recycled fibers and includes the unique 37.5 Degree temperature regulating fabric ideal for the climb of boot packing and associated downhill arcs of powder skiing. Expressed in a sturdy navy and vibrant blue, the Powder 8 Trousers color and spirit are ideally suited to the Powder Enthusiast seeking first class performance for days of powder-driven adventure.

A unique Powder 8 performance pant fusing a recycled package of fiber with the temperature regulating characteristics, the Powder 8 Trousers inks the passion of skiings first powder hounds with a retro-athletic color presentation expressive of the vibrant attitude of off-piste tandem skiing. Designed with a sustainable complexion commanding 85% recycled content, 10k/10k windproof & waterproof interior membrane, and classic cross hatch suspender kit, this protective pant is created for the soulful Powder Enthusiast seeking first class performance and style for off-piste powder filled adventure.

CABLE 8'S SWEATER

Style # 100065

NEW



Navy



Cream

With its distinct cable pattern, no other knitwear garment possesses such a wonderful blend of protective quality and personality as that of the Cable Knit Sweater. Initially devised in the early 19th century to offer protection from the outdoors and inclement weather, the cable knitting technique produced a technological leap forward by creating a fiber weave with enhanced performance characteristics of insulation and durability. In fact, when initially produced from untreated wool, the natural lanolin oils of the fiber created a near water resistant garment. Distinctive and raised yarn elements soon emerged from the specific cable knitting method and due to its simultaneous buffering against high winds & rain, it was not long before this unique class of sweater infiltrated the world of alpine sport. A preferred mid and modest outerwear layer, the cable knit and its distinctive woven pattern became a chic wardrobe staple of choice for the powder skiers of the 70's and 80's. Evoking the tandem arc turns of the Powder 8 competition's first athletes, Alps & Meters' Cable 8 Sweater is a form fitting knitwear garment with classic crew neck and a luxurious hand feel. Designed for the high taste alpine sportsman, the Cable 8's Sweater commands softly blended cashmere-merino yarns, tailored fit, and powder8 cable motifs offering total off-piste and apres-ski comfort.

A traditional knitwear garment with repeating arc motifs, the Cable 8 Sweater is crafted from a rich cashmere-merino yarn blend and exhibits a traditional crew neck design with scalloped drop tail. Soft to the body and delivering a tidy feminine fit, this staple of the W's Powder 8 Collection is as elegant as the tandem down hill turns for which it is named. Neck and waist ribbing details accentuate the texture and personality of a product celebrating the advent of off-piste powder skiing during the 1970's

TECHNICALLY KNITTED

70% super-fine merino 30% Yak yarns blended for softness, form-fitting comfort and lasting durability.

FIT FOR WARMTH

Crewneck and fitted cuffs for additional comfort.

DRY & PROTECTED

Natural yarn body offers moisture wicking and temperature regulation.

Sizes: S, M, L, XL, XXL

POWDER 8'S KNIT

Style # 100066

NEW



Navy



Blue

A timeless alpine sporting staple, knitwear has been woven into the fabric of skiing's history since Scandinavian's first applied wooden planks to their feet as a mode of travel and winter mobility. First devised for pure utility, sweaters were of a relatively easy make as woven from the natural fibers of local livestock. Such appreciation for warmth and protection soon included both taste & fashion as alpine sport came into vogue during the early 20th century, and during the powder skiing rebellion of the 1970's ski sweaters adopted monikers and graphics associated with the tribe of powder enthusiasts trading the monotony of groomed terrain for the wild variety of backcountry adventure. Expressive and full of vibrant personality, the attitude of powder skiing reflected the unique combination of freedom and joy found amidst untracked terrain and outside of the restrictive boundaries of the resort proper. Signaling such off-piste attitudes and the soulful arcs accompanying such out of bounds recreation, Alps & Meters introduces the Powder 8 Knit. Cut in a classic crewneck silhouette and knitted from robust merino fibers, this classic ski sweater includes traditional ribbed elbow elements and the vertical "top-to-bottom turns" graphic. conveying powder skiing's lasting & indelible imprint on both the terrain and wider sport of skiing worldwide,

Celebrating the floating arcs of 1970's powder skiing, the Alps & Meters Powder 8 Knit is designed for Powder Enthusiasts seeking high quality alpine knitwear with expressive characteristics and first class performance. Crafted of robust moderate gauge merino yarns with accentuated ribbing a waist, cuffs, and elbows, this classic crewneck sweater is best suited to mid-layer skiing, apres, or evening fireside wear occasions in mountain towns the world over.

TECHNICALLY KNITTED

Extra fine, tight knit, 100% merino knit provides warmth and durability

ERGONOMIC ELBOW KNIT

Rib-knit elbows engineered for flexibility and durability

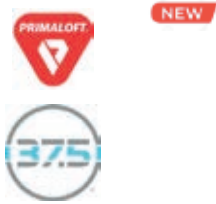
TRADITIONAL ALPINE FIT

Tailored product dimensions provide form fitting comfort

Sizes: S, M, L, XL, XXL

W'S POWDER 8'S JUMPSUIT

Style # 120035



Navy

DRY AND PROTECTED

Recycled polyester
4 way stretch water proof shell fabric 10K / 15K with 37.5
branded technology.
Innovative recycled waterproof 10K / 15K stretch corduroy
overlays
Primaloft Gold 80g

MAXIMUM UTILITY

Removable helmet compatible hood

Sizes: 0, 2, 4, 6, 8, 10, 12

Alpine lore credits the invention of the one piece ski suit to Italian designer and skier Emilio Pucci. At the age of just 17, Pucci was part of the Italian Ski Team who travelled to Lake Placid, New York for 1932 for the Winter Olympic Games. However, unable to compete, he became a keen observer of race kits and the evolving winter sport garb of the era. Thereafter, Pucci arrived in the United States where he studied and joined his collegiate ski team. Many ski team members, unfamiliar with the cold temperatures of the mountains, sought Pucci's help to maintain comfort and nudged Pucci to designed his first full body suit. Lacking drafty seams and a break at the waist, the one piece design's innovative head-to-coverage delivered warmth, streamlined-line fit, and cache. Fleeting adopted for the next decade it wasn't until the powder skiing boom of the 1970's that the Jumpsuit came into vogue offering waist deep seam sealed protection and bold personality associated with the unfolding off-piste movement of the moment. Revisiting this traditional, iconic, and inventive silhouette, Alps & Meters has designed its contoured Powder 8 Jumpsuit with of 85% recycled fibers, high performance Prima Loft insulation and a colorful retro-athletic expression of Powder 8 skiing's past

Revisiting the retro-athletic expression and vibrancy of the Powder 8 era, Alps & Meters introduces the W's Powder 8 Jumpsuit. Designed with feminine contours and form-fitting characteristics this high performance one-piece channels the vibrant & rebellious attitude of powder skiing in a product package commanding 85% recycled fiber, Prima Loft insulation, and 37.5 Degree bio-membrane regulating body temperatures at variable elevations. A celebration of the pure joy of powder skiing the W's Powder 8 Jumpsuit is designed for the Female Alpinists seeking sophisticated quality and contemporary coverage ideal for powder-filled downhill flight.

W'S CODY POWDER 8'S JACKET

Style # 120036



Navy



Blue

DRY AND PROTECTED

Recycled polyester
4 way stretch water proof shell fabric 10K / 15K with 37.5
branded technology.
Innovative recycled waterproof 10K / 15K stretch corduroy
overlays
800 fill goose down

MAXIMUM UTILITY

Removable helmet compatible hood

Sizes: 0, 2, 4, 6, 8, 10, 12

Originally freewheeling and full of unbridled speed, the ski racing of the early 20th century ultimately come under the auspices of governing bodies such as the newly formed FIS and, within the United States, the National Ski Association of 1905. Previously confined to groomed & gated terrain a spark of skiing's original rebellious & passionate spirit arose during the 1970's with a seismic shift from on-piste to off-piste attitudes of downhillers within the United States. Having over corrected in favor of roped boundary defined terrain, resort owners of the post-1950's era inadvertently created an uprising that would create the next great wave of alpine culture: powder skiing. At first ignited by just a few brave renegades, the flames of powder skiing were fanned into a combustible explosion of out of bounds activity by the freedom fueled rebellion, rediscovered addiction, and gravity defying experience of floating through snow. As the joy of powder skiing spread, female powder hounds, first jointed together by a buddy system centered upon out-of-bounds safety, soon formed synchronized skiing tandems that came to arc co-joined turns in a soulful rhythm that harkened back to the simple origins of skiing itself. An expression of downhill joy, the soon to become Powder 8 skiing movement was marked by a athletic and expressive series of garments comprised of vibrant primary colors exuding a personality of fun, camaraderie, and delight of this new found off-piste activity. Revisiting the retro-athletic expression and vibrancy of the Powder 8 era, Alps & Meters introduces the W's Powder 8 Redux Jacket. Designed with of 85% recycled fibers and including traceable 800 filled Allied Down as well as unique 37.5 Degree temperature regulating fabric, technology this full zip jacket combines the colorful retro-athletic persona of Powder 8 skiing's past with contemporary protection aimed at maximizing protective alpine performance.

The Alps & Meters W's Powder 8 Redux Jacket channels the soulful spirit of fun & freedom expressed during the powder skiing boom of the 70's & 80's. Designed with a heritage-athletic expression and vibrant palette therein, this high performance feminine outerwear product is responsibly built with 85% recycled fabric and commands robust proactive technologies including 800 down-fill power and temperature regulating membranes managing heat & moisture during off-piste powder skiing adventures. Revisiting the tradition of powder skiing's iconic past along with Alps & Meters female fit & finishing, the W's Powder 8 Redux Jacket is ideal for alpine women seeking classic quality combined with fashionable alpine sporting cues & color.

W'S POWDER 8'S

Pant

Style # 120037



Navy



Green

DRY AND PROTECTED

Recycled polyester
4 way stretch water proof shell fabric 10K / 15K with 37.5 branded technology.
Innovative recycled waterproof 10K / 15K stretch corduroy overlays
Primaloft Gold 40g

Sizes: 0, 2, 4, 6, 8, 10, 12

First adopted from the high street fashions of the day, the female ski enthusiast of the late 19th and early 20th centuries wore bottoms cut from local fibers which were shaped by the tastes of the day. Often crafted of wool with minimal femininity, women at the advent and forefront of alpine sport wore such daily garb to the mountain in what was considered proper attire attune with skiing's well-to-do sporting status. Such wardrobes continued to populate the slopes throughout the 1950's and 1960's when general conformity drove the social norms of alpine sport. However, such regulation was shattered in the 70's when backlash arose at the restrictive nature of resort skiing confining the free spirit of skiing's original mantra. Liberation became the norm in both societal and skiing terms and female skiers joined the movement by ducking ropes in search of higher elevations and untracked powder. Gone was the conservative rule-following male dominated conformity of the first 50-60 years of the 1900's replaced by the bold, brash, and vibrant female personalities who founded powder skiing and its proper Powder 8 competition. Carving was replaced with floating and once subdued kits exploded with color and attitude reflecting the newfound joy of of snow-filled off-posted adventure. Glowing with an elegant attitude, feminine cut & contours, as well as classic knee color accentuation, Alps & Meters' W's Powder 8 Pant is crafted of 85% recycled fibers and includes the unique 37.5 Degree temperature regulating fabric ideal for associated downhill arcs of powder skiing. Expressed in a sturdy navy and vibrant green, the W's Powder 8 Pant's color and spirit are ideally suited to the Powder Enthusiast seeking first class performance for days of powder-driven adventure.

A unique Powder 8 performance pant fusing a recycled package of fiber with the temperature regulating characteristics, the W's Powder 8 Trouser links the celebration of skiing's first Powder 8 competition with a retro-athletic color presentation expressive of the vibrant attitude of off-piste tandem skiing. Designed with a sustainable complexion commanding 85% recycled content, 10k/10k windproof & waterproof interior membrane, and accentuated feminine fit, this protective pant is created for the soulful Powder Enthusiast seeking alpine sportswear with high taste and first class protective performance.

W's POWDER 8 VEST

Style # 120038

NEW



Blue



Navy

Classic Protection

Classic Primaloft Gold quilted zippered quilted vest

Maximum Utility

Zippered hand pockets and knitted collar for comfort and warmth

Quality & Durability

Recycled facing outer material and suede elbow patches for natural protection from the elements

Sizes: XS, S, M, L, XL

Of polished British origins, many consider the women of the Kandahar Ski Club to have represented one of the first formally organized bodies dedicated to the rising sport of skiing. Designed for the refined alpine sportswoman, Women's Schilthorn Vest Italiana is a four season coverall celebrating of the legacy of Kandahar's original original female membership. Commanding first class Italian craftsmanship, a richly baffled Loro Piana wool face fabric and exquisite trim work, this luxury vest exudes an on & off-piste persona of high taste, European panache, and timeless mountain comfort.

W'S CABLE 8'S SWEATER

Style # 120001



Blue

TECHNICALLY KNITTED
70% super-fine merino 30% Yak yarns blended for softness, form-fitting comfort and lasting durability.

FIT FOR WARMTH
High collar and fitted cuffs for additional comfort.

DRY & PROTECTED
Natural yarn body offers moisture wicking and temperature regulation.

Sizes: XS, S, M, L, XL



Navy



Ivory

With its distinct cable pattern, no other knitwear garment possesses such a wonderful blend of protective quality and personality as that of the Cable Knit Sweater. Initially devised in the early 19th century to offer protection from the outdoors and inclement weather, the cable knitting technique produced a technological leap forward by creating a fiber weave with enhanced performance characteristics of insulation and durability. In fact, when initially produced from untreated wool, the natural lanolin oils of the fiber created a near water resistant garment. Distinctive and raised yarn elements soon emerged from the specific cable knitting method and due to its simultaneous buffering against high winds & rain, it was not long before this unique class of sweater infiltrated the world of alpine sport. A preferred mid and modest outerwear layer, the cable knit and its distinctive woven pattern became a chic wardrobe staple of choice for the powder skiers of the 70's and 80's. Evoking the tandem arc turns of the Powder 8 competition's first athletes, Alps & Meters' W's Cable 8 Sweater is a form fitting knitwear garment with classic roll neck and a luxurious hand feel. Designed for the high taste alpine sportswoman, the W's Cable 8's Sweater softly blended cashmere-merino yarns, tailored fit, and powder8 cable motifs offer total off-piste and apres-ski comfort.

A traditional knitwear garment with repeating arc motifs, the W's Cable 8 Sweater is crafted from a rich cashmere-merino yarn blend and exhibits a traditional roll neck design with scalloped drop tail. Soft to the body and delivering a tidy feminine fit, this staple of the W's Powder 8 Collection is as elegant as the tandem down hill turns for which it is named. Neck and waist ribbing details accentuate the texture and personality of a product celebrating the advent of off-piste powder skiing during the 1970's

W'S POWDER 8 KNIT

Style # 120040



Navy

TECHNICALLY KNITTED
70% super-fine merino 30% cashmere yarns blended for softness, form-fitting comfort and lasting durability.

FIT FOR WARMTH
Crewneck and fitted cuffs for additional comfort.

DRY & PROTECTED
Natural yarn body offers moisture wicking and temperature regulation.

Sizes: XS, S, M, L, XL



Yellow

A timeless alpine sporting staple, knitwear has been woven into the fabric of skiing's history since Scandinavian's first applied wooden planks to their feet as a mode of travel and winter mobility. First devised for pure utility, sweaters were of a relatively easy make as woven from the natural fibers of local livestock. Such appreciation for warmth and protection soon included both taste & fashion as alpine sport came into vogue during the early 20th century, and during the Women's powder skiing rebellion of the 1970's ski sweaters adopted monikers and graphics associated with the tribe of powder enthusiasts trading the monotony of groomed terrain for the wild variety of backcountry adventure. Expressive and full of vibrant personality, the attitude of powder skiing reflected the unique combination of freedom and joy found amidst untracked terrain and outside of the restrictive boundaries of the resort proper. Signaling such off-piste attitudes and the soulful arcs accompanying such out of bounds recreation, Alps & Meters introduces the W's Powder 8 Knit. Cut in a classic crewneck silhouette and knitted from ultra-soft cashmere-merino fibers, this classic ski sweater includes traditional ribbed elbow elements and the vertical "top-to-bottom turns" graphic, conveying powder skiing's lasting & indelible imprint on both the terrain and wider sport of skiing worldwide,

Celebrating the floating arcs of 1970's powder skiing, the Alps & Meters' W's Powder 8 Knit is designed for the female Powder Enthusiasts seeking high quality alpine knitwear with expressive characteristics and first class performance. Crafted of ultra-soft cashmere-merino yarns with accentuated ribbing a waist, cuffs, and elbows, this classic crewneck sweater is best suited to post-powder apres settings or evening fireside wear occasions in mountain towns the world over.



Ascent

The Golden Age of Mountaineering was a time of outdoor enlightenment in which alpine sport was born. A period in which sophisticated men & women shed their earth bound shackles to discover and pursue harmony amidst the peaks & snow of the surrounding terrain, the climbers of the mid-19th century and early ski mountaineers of the next decade and beyond, began a journey of mountain and personal discovery that continues to fuel first ascents today. A founding father of ski mountaineering, Fridtjof Nansen, whose name was then adhered to New Hampshire's first ski club, said that alpine sport is "something that develops not only the body but the soul" and this, after completing 310 mile ski crossing of Greenland (1888). Other legends of early ski mountaineering include Sondre Norheim of Morgedal (1850), in the Telemark region of Norway who devised the skiing technique that today bears the regions namesake, Snowshoe Thompson (1856) whose mystique & alpine exploits still lives on in California, and the famous Pinnacle Club of Women's alpinist whose organization turned 100 years old seven decades after Lucy Walker of Britain was first women to summit the Eiger and Matterhorn. Seeking both scientific and human insight in pursuit of elevation and the downhill flying sensation of a summit-to-bottom ski, such activities remained full of risk and tested the durability of the human spirit in connection with nature. Creating the electric tension between risk and sport which drives ski mountaineering today, Alps & Meters Ascent Collection celebrates an alpinists strong connection to nature as manifested within its Italian-harvested biodegradable Sherpa complexion and application of classic gabardine and leather trims associated closely with the fabrications of ski mountaineering's Scandinavian & European origins. A celebration of the long-standing marriage between ski-climbers and the natural mountainous world call out to us for adventure, Alps & Meters Ascent garments celebrate the first summits of the past and the climbs of tomorrow.





ASCENT SHELL

Style # 100048



Forged Stone



Navy



Chili Pepper

NEW

Dry & Protected

Blue Sign certified, 3 layer 20k/20k waterproof, Schoeller wool-blend shell fabric with "C-Change" technology shields from wind and snow.

Classic Protection

Helmet compatible, adjustable hood design, Classic front closure with face guard for enhanced wind protection

Cut for Comfort

Underarm venting provides easy ventilation, drop tail for enhanced coverage

Maximum Utility

Flap-protected, hand-warmer pockets and additional, zippered hand pockets for easy access and dry storage.

Quality & Durability

Reinforced elbow and shoulder panels accommodate ski carry for long-lasting garment durability.

Sizes: S, M, L, XL, XXL

Alpinist have long embraced the cold confines and variable atmosphere of the mountains since the Golden Age of first ascents dawned on the mid-late 19th century. However, such an embrace required then as it does today an assemblage of garments designed to accommodate the changing terrain from approach to ascent as well as inconsistent weather often mixed of wet can cold forms of precipitation. As such, ski mountaineers of the late 1800's and early 20th century, relied on durable, hardwearing, and protective outerwear originally crafted of gabardine, a worsted mix of cotton. Often worn in concert with classic knitwear or sherpa-like lambswool garments, the jackets, parkas, and anoraks accompanying early mountain & winter adventurers acted as windbreakers while guarding the use from sleet and snow. Channeling the Founding Fathers of ski mountaineering such as Fridtjof Nansen and the spirit of the natural fibers from which original mountaineering outerwear was fabricated, Alps & Meters has designed the Ascent Shell. Like its brethren of old, this traditional alpine garment revisits the origins of classic outerwear with a focus upon maximum mountain-ready function and comprehensive Forged Performance protection. Crafted to protect from the elements while commanding a lightweight versatility the Ascent Shell is the perfect companion for the Gentlemen Alpinist in pursuit of alpine sport at elevations and amidst modest temperatures and variable precipitation.

The Ascent Shell is intended to reflect the utility of mountaineering's first functional outerwear which, when married with base & mid-layers of classic knitwear, delivered versatile protection from wind, rain, sleet, and snow. An homage to the original outerwear of the Golden Age of Alpinism, the Ascent Shell is designed in collaboration with the famed Schoeller mill of Switzerland whose innovative fabrics, created at the foot of the Alps, have supplied modern day skiers & explorers with precision protection for all mountain climes. A mixed medium face fabric of natural merino fibers and seam sealed construction delivers a 100% waterproof breathable garment built to adhere to Alps & Meters' exacting standards of classic performance. Lightweight and packable making the piece ideal for modest temperatures and off-piste activities the Ascent Shell marries the pioneering spirit of Europe's first ski mountaineers with contemporary attributes enabling the Gentleman Skier's pursuit of alpine sport amidst high winds, snow, and variable precipitation.

ASCENT BIB

Style # 100050



Forged Stone

Dry & Protected
Blue Sign certified, 20k/20k waterproof, 3-layer Schoeller shell fabric with "C-Change" technology shields from wind and snow, interior windproof/waterproof membrane.

Classic Protection
Time-tested bib construction for all-weather protection.

Maximum Utility
Five separate, protected, zippered hand pockets for easy access and dry storage. Front zip for easier access and ventilation

Quality & Durability
Reinforced boot panels and ergonomic knees protect from wear and tear.

Sizes: S, M, L, XL, XXL



Navy



Chili Pepper

NEW

First and foremost a pursuit focused upon the human spirit in commune with nature, The Gentlemen adventurers of the Golden Age of Alpinism who gave birth to ski mountaineering and climbing gave limited thought to garment innovation until the end of the 19th century. Satisfied with their well-to-do high street ensembles many of the initial forays into the Alps of Europe were conducted in the classic wools, knits, and caps that defined the clothing of the era. However, with the arrival of Burberry's dense, breathable gabardine waxed cotton and a continued push into colder climes and elevations weatherproof protection became the focus of specialized garment designers of the era. As such, perhaps one of the most important functional advancements of early 1900's was the transformation of woolen waisted suit trousers and knickers, formerly standard wear of alpinists of the 1800's, into a bibbed "lederhosen" which eventually traded buttons for zip fastenings. Considering the further reaches of solo and group expeditions the increased combination of innovation and practicality of such a novel product delivered a wide range of added benefits including enhanced body coverage, stronger sealant from the elements, and more ample & accessible storage. Alps & Meters Ascent Bib revisits the creative leap associated with the first top-to-bottom trousers adopted by Gentlemen Alpinists of the Golden Age and beyond. Crafted with Swiss engineered Schoeller waterproof blend of natural fibers and high waisted suspender construction, this first class outerwear garment is equipped with comprehensive protection and temperature regulating features enabling daily or extended ski mountaineering adventures.

Designed to channel the original outerwear of the Golden Age of alpinism and its influence among early 20th century winter sportsmen, the Ascent Bib evokes the traditions from which the first ski trousers were constructed. Employing Swiss engineered waterproof face fabric from the storied Schoeller mill of Switzerland along with additional natural accents enhancing comfort and articulation, the Ascent Bib is an precise performance pant which evokes the personality of the Gentleman Mountaineers of the early late 19th century whose first forays in the Alps unlocked journey's of personal discovery which are still unfolding today.

ASCENT GUIDE JUMPER

Style # 100053

NEW



Natural

Warm & Protected
Italian wool blend short pile sherpa commands the following sustainable certifications: Standard 100 by OEKO-TEX® and Responsible Wool Standard (RWS)

Classic Protection
High zip collar and waist cinches trap body heat to provide warmth

Cut for Comfort
Anatomical armholes provide unrestricted mobility. Classic funnel collar provides protection from the elements.

Maximum Utility
Large, front zip hand warmer pocket and zip chest pocket for easy access and dry storage.

Quality & Durability
Waxed cotton shoulder and elbow panels

Sizes: S, M, L, XL, XXL



Navy



Charcoal

Since the dawn of the Golden Age of Alpinism, ski mountaineering has always required a multi-disciplinary skill set involving approach techniques, skinning, telemark, climbing, and a pure alpine skiing technique should the snow pack be secure. Beginning in the early 20th century and shortly thereafter, mountaineers began to explore more extreme terrain, high exposure routes, and more adverse & variable conditions. It was not long after the advent of such proper expeditions that the combination of standard woolen and gabardine garments of the 1900's required further advancement in terms of alpine protection. Not long after its observation of use in the East did Western ski mountaineers adopt the evolutionary characteristics of the high pile wool within their arsenal of mid-layers and outerwear. It is in the spirit of West-meets-East and Past-meets-Present that Alps & Meters introduces the Ascent Sherpa Jumper. Sourced from Italian yarn, Alps & Meters' choice of fiber is a robust recycled all natural wool cut with a 3/4 zip front placket and kangaroo waist pocket utility. Coupled with robust and highly durable Halley Stevenson waxed cotton overlays, the Ascent Sherpa Jumper is built for the Gentleman Mountaineer seeking alpine equipment that is tailored, technical, and timeless.

Paying homage to the era of personal discovery and first ascents associated with the winter expeditions of the mid-late 1800's and early 20th century, the Ascent Sherpa Jumper marries robust recycled Italian wool and protective Halley Stevenson waxed cotton embellishments to craft a handsome garment connecting alpinism's golden past with the present. A versatile mid-layer piece employing a high pile complexion, 3/4 zip front placket and kangaroo storage pocket utility this handsome products is built for the Gentleman Mountaineer seeking alpine equipment that is tailored, technical, and timeless.

ASCENT TROUSER

Style # 100051



Forged Stone

Dry & Protected
Blue Sign certified, 20k/20k waterproof, 2-layer Schoeller wool-blend shell fabric with "C-Change" technology shields from wind and snow, interior windproof/waterproof membrane. PrimaLoft Gold (40g) provides insulated warmth.

Classic Protection
Time-tested bib construction for all-weather protection.

Cut for Comfort
Front zip for easier access and ventilation

Maximum Utility
Four separate, protected, zippered hand pockets for easy access and dry storage.

Quality & Durability
Reinforced boot panels and ergonomic knees protect from wear and tear.

Sizes: S, M, L, XL, XXL

First and foremost a pursuit focused upon the human spirit in commune with nature, The Gentlemen adventurers of the Golden Age of Alpinism who gave birth to ski mountaineering and climbing gave limited thought to garment innovation until the end of the 19th century. Satisfied with their well-to-do high street ensembles many of the initial forays into the Alps of Europe were conducted in the classic wools, knits, and caps that defined the clothing of the era. However, with the arrival of Burberry's dense, breathable gabardine waxed cotton and a continued push into colder climes and elevations weatherproof protection became the focus of specialized garment designers of the era. As such, perhaps one of the most important functional advancements of early 1900's was the transformation of woolen waisted suit trousers and knickers, formerly standard wear of alpinists of the 1800's, into a bibbed "lederhosen" which eventually traded buttons for zip fastenings. Considering the further reaches of solo and group expeditions the increased combination of innovation and practicality of such a novel product delivered a wide range of added benefits including robust lower torso coverage, stronger sealant from the elements, and more ample & accessible storage. Alps & Meters Ascent Trousers revisits the creative leap associated with the first trousers adopted by Gentlemen Alpinists of the Golden Age and beyond. Crafted with Swiss engineered Schoeller waterproof blend of natural fibers, this first class outerwear garment is equipped with comprehensive protection and temperature regulating features enabling daily or extended ski mountaineering adventures.

Designed to channel the original outerwear of the Golden Age of alpinism and its influence among early 20th century winter sportsmen, the Ascent Trousers evokes the traditions from which the first ski bottoms were constructed. Combining the past and the present to offer handsome protection to the Gentleman Skier seeking adventure at consequential elevations this unique high performance pant combines traditional fibers with contemporary technologies to deliver a Forged Performance garment of exceptional quality and robust protective characteristics. Employing Swiss engineered waterproof face fabric from the storied Schoeller mill of Switzerland along with additional natural accents enhancing comfort and articulation, the Ascent Trousers is a precise performance pant which evokes the personality of the Gentleman Mountaineers of the early late 19th century whose first forays in the Alps unlocked journey's of personal discovery which are still unfolding today.

ASCENT BEANIE

Style # 200009



Grey

TECHNICALLY KNITTED
70% super-fine merino 30% cashmere yarns blended for softness, form-fitting comfort and lasting durability.

ALPINE TRADITION
Classic Watch Cap inspired by alpine sport heritage.



Navy



Charcoal

The early annals of mountaineering during the Golden Age of Alpinism saw the philosophers, scientists, and poets take to the mountains in search for a soulful convenient with nature at elevation. Most often devised from fibers from the surrounding areas of the Alps, Europe's first mountain pioneers skied and climbed in heavy gauge sweaters, outerwear of gabardine fabric, and headwear often handwoven with deep care & consideration. Even then, the early alpinists of the Golden Age understood that climbs of any consequence required mental fortitude and protection therein. Often shedding the superfluous in favor of the bare essentials, knitted caps of the 19th century were trim and their strictly purposeful in their design. Cut close to the scalp to ensure snug fit devoid of drafts for slippage that might impair one's vision during ascent or descent, such headwear commanded a purity of performance demanded by the elements of biting wind and precipitation. Fitted with the ability to nest with a hood, Alps & Meters Ascent Beanie invokes the best practice of traditional alpine sport design and craftsmanship. Closely cropped in its design and woven of sturdy cashmere-merino yarns, this unique beanie commands a warm waffled weave reducing lost heat while lending a nostalgic expression familiar to the Golden Age of Alpinism. Designed for the Adventurous Alpinist this classic headwear piece offers protective comfort, a timeless & durable fiber complexion, and form fitting characteristics enabling a skin, bootpack, or climb from one elevation to the next.

W's ASCENT SHELL

Style #120021



Atmosphere

The W's Ascent Shell is intended to reflect the utility of mountaineering's first functional outerwear which, when married with base & mid-layers of classic knitwear, delivered versatile protection from wind, rain, sleet, and snow. An homage to the original outerwear of the Golden Age of Alpinism, the W's Ascent Shell is designed in collaboration with the famed Schoeller mill of Switzerland whose innovative fabrics, created at the foot of the Alps, have supplied modern day skiers & explorers with precision protection for all mountain climes. A mixed medium face fabric of natural merino fibers and seam sealed construction delivers a 100% waterproof breathable garment built to adhere to Alps & Meters' exacting standards of classic feminine performance. Lightweight and packable making the piece ideal for modest temperatures and off-piste activities the W's Ascent Shell marries the pioneering spirit of Europe's first women ski mountaineers with contemporary attributes enabling the Female Alpinists pursuit of winter sport amidst high winds, snow, and variable precipitation.

Dry & Protected

Blue Sign certified, 20k/20k waterproof, 3-layer, Schoeller wool-blend shell fabric with "C-Change" technology shields from wind and snow.

Classic Protection

Helmet compatible, adjustable hood design, Classic front closure with face guard for enhanced wind protection

Cut for Comfort

Underarm venting provides easy ventilation, drop tail for enhanced coverage

Maximum Utility

Flap-protected, hand-warmer pockets and additional, zippered hand pockets for easy access and dry storage.

Quality & Durability

Reinforced elbow and shoulder panels accommodate ski carry for long-lasting garment durability.



Forged Stone



Merlot

W's ASCENT INSULATED JACKET

Style # 120022



Forged Stone

Dry & Protected

Blue Sign certified, 20k/20k waterproof, 2-layer Schoeller wool-blend shell fabric with "C-Change" technology shields from wind and snow, interior windproof/waterproof membrane. Primaloft Gold (80g) provides insulated warmth.

Classic Protection

Helmet compatible, adjustable hood design, Classic front closure with face guard for enhanced wind protection

Cut for Comfort

Underarm venting provides easy ventilation, drop tail for enhanced coverage

Maximum Utility

Flap-protected, hand-warmer pockets and additional, zippered hand pockets for easy access and dry storage.

Quality & Durability

Reinforced elbow and shoulder panels accommodate ski carry for long-lasting garment durability.



Atmosphere

Female alpinists have long embraced the cold confines and variable atmosphere of the mountains since the Golden Age of first ascents dawned on the mid-late 19th century. However, such an embrace required then as it does today an assemblage of garments designed to accommodate the changing terrain from approach to ascent as well as inconsistent weather often mixed of wet can cold forms of precipitation. As such, women ski mountaineers of the late 1800's and early 20th century, relied on durable, hardwearing, and protective outerwear originally crafted of gabardine, a worsted mix of cotton. Often worn in concert with classic knitwear or sherpa-like lambswool garments, the jackets, parkas, and anoraks accompanying early mountain & winter adventurers acted as windbreakers while guarding the use from sleet and snow. Channeling the Female Founders of ski mountaineering such Lucy Walker and the spirit of the natural fibers from which original mountaineering outerwear was fabricated, Alps & Meters has designed the W's Ascent Insulated Jacket. Like its sisters of old, this traditional alpine garment revisits the origins of classic outerwear with a focus upon maximum mountain-ready function and comprehensive Forged Performance insulation.

Crafted to reflect the spirit of alpinism's Golden Age in which natural fibers were first fused with new innovative technologies of the coming 20th century, this Forged Performance piece is constructed in partnership with the storied Schoeller Mill of Switzerland whose innovative fabrics, created at the foot of the Alps, have supplied modern day skiers & explorers with precision protection for all mountain climes. A mixed medium face fabric of natural merino fibers coupled with Primaloft Gold insulation, this Forged Performance product is built to adhere to Alps & Meters' exacting standards of classic feminine performance. Ideal for cold weather excursions on and off-piste, the W's Ascent Insulated Jacket marries the pioneering spirit of Europe's first women mountaineers with contemporary attributes enabling the Female Alpinist's pursuit of winter sport at elevation and amidst lower, less hospitable temperatures.

W's ASCENT BIB

Style # 120023



Forged Stone

Dry & Protected
Blue Sign certified, 20k/20k waterproof, 3-layer Schoeller wool-blend shell fabric with "C-Change" technology shields from wind and snow, interior windproof/waterproof membrane. Primaloft Gold (40g) provides insulated warmth.

Classic Protection
Time-tested bib construction for all-weather protection.

Cut for Comfort
Front zip for easier access and ventilation

Maximum Utility
Five separate, protected, zippered hand pockets for easy access and dry storage.

Quality & Durability
Reinforced boot panels and ergonomic knees protect from wear and tear.



Atmosphere



Merlot

First and foremost a pursuit focused upon the human spirit in commune with nature, The Female adventurers of the Golden Age of Alpinism who pioneered women's ski mountaineering and climbing gave limited thought to garment innovation until the end of the 19th century. Satisfied with their well-to-do high street ensembles many of the initial forays into the Alps of Europe were conducted in the classic wools, knits, and caps that defined the clothing of the era. However, with the arrival of Burberry's dense, breathable gabardine waxed cotton and a continued push into colder climes and elevations weatherproof protection became the focus of specialized garment designers of the era. As such, perhaps one of the most important functional advancements of early 1900's was the transformation of woolen stockings & knickers, formerly standard wear of female alpinists of the 1800's, into a bibbed "lederhosen" which eventually traded buttons for zip fastenings. Considering the further reaches of solo and group expeditions the increased combination of innovation and practicality of such a novel product delivered a wide range of added benefits including enhanced body coverage, stronger sealant from the elements, and more ample & accessible storage. Alps & Meters' W's Ascent Bib revisits the creative leap associated with the first top-to-bottom trousers adopted by Female Alpinists of the Golden Age and beyond. Crafted with Swiss engineered Schoeller waterproof blend of natural fibers and high waisted suspender construction, this first class outerwear garment is equipped with comprehensive protection and temperature regulating features enabling daily or extended ski mountaineering adventures.

W's Ascent Bib evokes the traditions from which the first ski trousers were constructed. Combining the past and the present to offer elegant protection to the Female Alpinist seeking adventure at consequential elevations this unique high performance bib combines traditional fibers with contemporary technologies to deliver a Forged Performance garment of exceptional quality and robust protective characteristics. Employing Swiss engineered waterproof face fabric from the storied Schoeller mill of Switzerland along with additional natural accents enhancing comfort and articulation, the W's Ascent Bib is an precise performance pant which evokes the personality of the Women Mountaineers of the early late 19th century whose first forays in the Alps unlocked journey's of personal discovery which are still unfolding today.

W's ASCENT GUIDE JUMPER

Style #120026

NEW



tessile fiorentina



Natural



Charcoal

Warm & Protected

Italian wool blend short pile sherpa commands the following sustainable certifications: Standard 100 by OEKO-TEX® and Responsible Wool Standard (RWS)

Classic Protection
High zip collar with button enclosures and waist cinches trap body heat to provide warmth

Cut for Comfort
Anatomical armholes provide unrestricted mobility. Classic funnel collar provides protection from the elements.

Maximum Utility
Large, front zip hand warmer pocket for easy access and dry storage.

Quality & Durability
Waxed cotton shoulder and elbow panels

Sizes: XS, S, M, L, XL

Since the dawn of the Golden Age of Alpinism, ski mountaineering has always required a multi-disciplinary skill set involving approach techniques, skinning, telemark, climbing, and a pure alpine skiing technique should the snow pack be secure. Beginning in the early 20th century and shortly thereafter, female mountaineers began to explore more extreme terrain, high exposure routes, and more adverse & variable conditions. It was not long after the advent of such proper expeditions that the combination of standard woolen and gabardine garments of the 1900's required further advancement in terms of alpine protection. Most especially, as the European standards and ascents of the Alps met with Eastern climbing experts and the monolithic peaks of the upper Asian continent, the discovery, spinning, and application of high piled wool served to enable increased heights of climbing while mitigating exposure to low temperatures. Not long after its observation of use in the East did Western ski mountaineers adopt the evolutionary characteristics of the high pile wool within their arsenal of mid-layers and outerwear. It is in the spirit of West-meets-East and Past-meets-Present that Alps & Meters introduces the W's Ascent Sherpa Jumper. Sourced from Italian yarn, Alps & Meters' choice of fiber is a robust recycled all natural wool cut with a 3/4 zip front placket and kangaroo waist pocket utility. Coupled with robust and highly durable Halley Stevenson waxed cotton overlays, the W's Ascent Sherpa Jumper is built for the Female Alpinist seeking elegant winter equipment that is tailored, technical, and timeless.

Paying homage to the era of personal discovery and first ascents associated with the winter expeditions of the mid-late 1800's and early 20th century, the W's Ascent Sherpa Jumper marries robust recycled Italian wool and protective Halley Stevenson waxed cotton embellishments to craft a sophisticated garment connecting alpinism's golden past with the present. A versatile mid-layer piece employing a high pile complexion, 3/4 zip front placket and kangaroo storage pocket utility this elegant product is built for the Female Alpinist seeking refined winter equipment that is tailored, technical, and timeless.



High West

"Go West young man." After WWII, ex-soldiers and trainers from the U.S. 10th Mountain Division led the boon in winter recreation within the Rockies and Western region of the United States. With deep ties to resorts such as Vail and Aspen Highlands, legends such as Pete Siebret, Whip Jones, and Dick Durrance became the fathers of Western resort skiing and winter recreation in the United States. Having trained or been trained on Camp Hale's storied terrain when associated with the famed 10th Mountain Division the pioneers of U.S. skiing turned passion into vision and an alpine sport experience which stands to this day. Such a history will fuel the "Western Pioneer" persona & presentation of the Fall/Winter 2021 HIGH WEST creative concept. A "cowboy" attitude will permeate the collection in the form of a spirit and product material complexion that will channel the sturdy and adventurous soul of United States Western resort and regions into an origin story and garments of exceptional "Americana - first class but rugged quality, that channels Colorado's glory days as the boomtown of winter recreation in the 1950's, 60's, and 70's.





**HIGH WEST
TURTLENECK**
Style # 100037



Ivory

TECHNICALLY KNITTED

70% super-fine merino 30% cashmere Oeko-Tex 100 standard yarns blended for softness, form-fitting comfort and lasting durability.

ALPINE TRADITION

Authentic roll-neck design inspired by alpine sport heritage.

DRY & PROTECTED

Natural merino and cashmere yarns offer moisture wicking and temperature regulation

FIT FOR WARMTH

High collar and fitted cuffs for additional comfort

Sizes: S, M, L, XL, XXL

Originally a moniker of the working class who preferred the total utility offered by the single high neck garment, turtlenecks or “roll necks” as first presented to the greater American public at the turn of the 20th century delivered a unique combination of maximum warmth, comfort, and range of motion ideal for cold weather labor. Then during the post WWII era within the United States, sportswear emerged as a specialized form of product dedicated to athletic performance and within the sport of skiing, primarily born to the Western region of the country, workwear and military cues informed the construction and presentation of winter-ready apparel including long underwear, knitwear, trousers, and jackets. Within such alpine ensembles, the turtleneck became staple layer of clothing which migrated from the cold plains and high west rustlers of the Rockies to the first trails cut on iconic mountains such as the Vail Resort which was founded by 10th Mountain Division veteran, Pete Seibert, and local rancher Earl Eaton. Delivering tried and true warmth characteristic of its original intention and authentic purpose, Alps & Meters' High West Turtleneck is designed by tradition. Fusing the garment's working class and rustic Western skiing origins with a first class yarn complexion, whether on piste or fireside during apres ski, the High West Turtleneck is an ideal piece of fully fashioned knitwear ideal for the Gentleman Skier possessing a passion for alpine sport and a pioneering spirit.

Crafted with ultra soft cashmere-merino blended yarns and employing traditional design sensibilities, the High West Turtleneck fuses the working class origins of the rustic roll neck silhouette with contemporary taste to deliver a handsome knitwear garment appropriate on-piste or fireside during apres ski. Reflecting classic military cues which informed the product's workwear adoption by Western rustlers and alpine recreationalists alike, this winter-ready style is ideal for the Gentleman Skier possessing a passion for alpine sport and a pioneering spirit.

**ALPINE GUIDE
HIGH WEST**
Style # 100035



Navy

TECHNICALLY KNITTED

80/20 lambswool-nylon yarn is ultra-soft, temperature regulating and naturally odor resistant.

QUALITY & DURABILITY

Reinforced waterproof corduroy shoulder panels for sturdy wear

MAXIMUM UTILITY

Water resistant zip-secure pockets at chest and waist designed for ease of access and dry storage

ERGONOMIC ELBOW KNIT

Rib-knit elbows engineered for flexibility and durability

Sizes: S, M, L, XL, XXL



Ivory



Grey

Travel to, and amidst, majestic mountain environments has offered skiers a sense of freedom and wonder since Scandinavians first strapped wooden planks to their feet in Norway during the late 19th century. During the early advent of skiing as a mode of travel and then throughout is transition to 19th and 20th century winter sport, a proper ski sweater was considered standard equipment for mountain adventures due to its technically advanced woolen fibers which offered warmth, comfortable range of motion, and natural moisture wicking characteristics. During the '50s, '60s, '70s, and '80s knitwear offered skiers a versatile expression of performance and style packaged in a traditional aesthetic born from the rich and storied heritage of alpine sport within the Western region of the United States. Adopted by alpine guides within mountain locales from Aspen to Chamonix, such classic knitwear garments are respected for their heavily tried and tested characteristics delivering a unique combination winter-ready benefits. Cultivating a marriage of centuries old technologies such as dense lambswool and rugged corduroy, Alps & Meters is pleased to once again offer this proper mountain sweater as a protective homage to skiing's oldest form of outerwear and its original pioneers, guides, and alpinists.

A staple of alpine sportsmen throughout the world, the protection, comfort, and durability of a proper sweater has accompanied mountain guides since the first ascents and descents by the Scandinavians of the 19th century. Crafted with natural lambswool and combining the sturdy qualities of corduroy, the Alpine Guide Sweater High West is an authentic ski sweater ideal for alpine excursions and mid-layer wear occasions.

HIGH WEST FLANNEL

Style # 100067

Milior

**HALLEY
STEVENSONS**
SINCE 1884



Blue

TECHNICALLY WOVEN

Luxe Milior® Italian merino wool yarns are blended for softness and lasting durability

TRADITIONAL ALPINE FIT

Classic construction and fit designed for total touring comfort

DRY & COMFORTABLE

Merino weave offers moisture wicking properties and optimal temperature regulation

QUALITY & DURABILITY

British Millerrain® Staywax Sahara 6, waxed cotton left shoulder and arm panels accommodates ski carry for long-lasting garment durability

MAXIMUM UTILITY

Left breast chest pocket provides ample storage and includes eyewear chamois for lens cleaning

CLASSIC CONSTRUCTION

Classic Flannel design inspired by traditional alpine sportswear

Sizes: S, M, L, XL, XXL



Red/Black

NEW



Black

During the early 20th century, skiing became the infatuation of gentlemen intrigued by the wonderful novelty and sliding on snow. In its transition from an efficient mode of winter transportation to exciting new recreational activity, skiers of the era, beyond a pair of leather boots and wooden skis, took little time to modify their head-to-toe wardrobes for use on-mountain. The 30's 40's and 50's were decades of smart wardrobes comprised of posh layers of collared shirts, knitwear, and woolen trousers that differed in only a minor manner from the high street fashions of the times. Within the alpine sports clubs of the day, classic skiing ensembles often included an oxford shirt with cuffed sleeves which conveyed skiing's then leisurely nature and the handsome appearance of its well-to-do enthusiasts. It is in this spirit that Alps & Meters has designed the Touring Flannel. Built with sturdy old-world qualities, tailored elements enhancing functional fit, and thoughtful use of contemporary technologies, this stylish shirt provides comfort and protection for travel to, up, and down mountain peaks around the world.

The Alps & Meters Touring Flannel is a tailored ski shirt design with versatile qualities appreciated and demanded by the Gentleman Skier. Like the classic collared shirts that made the transition from the high streets of the 1950's to the slopes of mountains around the world, the Touring Flannel is a constant companion of the Gentleman Skier when traveling to and within the mountains. Handsome and constructed with tailored ergonomic qualities, this unique garment is infused with contemporary protective attributes enhancing the comfort of on-mountain use. Ideal for touring, the Touring Flannel is offers lightweight insulation, accessible storage utility, and protective waxed cotton paneling packaged in an classic cut shirt representative of a simpler period within the annals of alpine sport.

**W's SUN VALLEY
KNIT**

Style # 120028



Ivory/Blue

TECHNICALLY KNITTED
70% super-fine merino 30% cashmere yarns blended for softness, form-fitting comfort and lasting durability.

FIT FOR WARMTH
High collar and fitted cuffs for additional comfort.

ALPINE TRADITION
Classic intarsia knit graphic inspired by the Wasatch Mountain Range of Park City, Utah USA

DRY & PROTECTED
Natural yarn body offers moisture wicking and temperature regulation.

Sizes: XS, S, M, L, XL



Navy

Site of the world's first chair lift in the United States and a bastion of classic American ski culture, Sun Valley was the winter playground of 20th century icons such as Ernest Hemingway, Clark Gable, Lucille Ball, Marilyn Monroe, and Ingrid Bergman. The first true destination ski resort in the continental USA, Sun Valley boasted the historic charm of Ketchum, Idaho coupled with ample sunlight and a bucolic atmosphere reminiscent of the storied resorts of Europe. In fact, when commissioned by Union Pacific Railroad Chairman, Averell Harriman to search the West for the location of a world class American ski resort, Harriman's scout reported on Sun Valley that "among the many attractive spots I have visited, this combines the more delightful features of any place I have seen in the United States, Switzerland, or Austria for a winter ski resort." With roots born of the post depression mining boom Sun Valley's appeal derives from its Western roots and gravity as a isolated locale where the celebrities of the 1950's could let their hair down while basking in sun-filled winter recreation. Celebrating Sun Valley as a first in American ski culture, Alps & Meters has designed the Sun Valley Knit. Woven of a luxurious cashmere-merino blend and emblazoned with a graphic representation of the spirit and iconic ethos of Idaho's famous resort and town known the world over, this elegant knitwear garment piece is ideal for alpine jet setters seeking the sun-filled climes of the United States classic Western ski resorts.

The W's Sun Valley Knit is a traditional knitwear style cut from fiber of America's first and foremost Western Ski Resort, Sun Valley Idaho. Woven in a luxurious cashmere-merino blend of fibers and depicting a graphic representation of Western resort skiings pioneers and celebrity who came to call Sun Valley home, this classic garment is ideal for alpine sport and apres settings alike. Designed with a dusty palette reminiscent of Sun Valley's post-depression era rise, like the bright sunlight which bathes the slopes the W's Sun Valley Knit conveys sentiments of both warmth and the timeless nostalgia of American skiings advent in the early 19th century.

**W's SKI RACE
KNIT WASATCH**

Style # 120015



Navy

TECHNICALLY KNITTED
70% super-fine merino 30% cashmere yarns blended for softness, form-fitting comfort and lasting durability.

FIT FOR WARMTH
High collar and fitted cuffs for additional comfort.

ALPINE TRADITION
Classic intarsia knit graphic inspired by the Wasatch Mountain Range of Park City, Utah USA

DRY & PROTECTED
Natural yarn body offers moisture wicking and temperature regulation.

Sizes: XS, S, M, L, XL



Desert



Charcoal



Merlot

An old western mining town, Park City Utah holds a unique dichotomy within the origin and current day of United States skiing culture. Now a world class alpine sport destination visited by first class celebrities and downhillers alike, Park City is at once a product of the old west and at the same time represents the past and present of skiing and apres' sport tradition. Home to the United States Ski Team and a breeding ground for some of the world's most legendary female ski racers whose passion and skill were honed in the local Wasatch Mountain Range, Park City's allure is also home to Robert Redford's Sundance Film Festival which has created a unique fusion of iconic alpine sport identities, long-lost cowgirl culture, and A-List celebrity. Celebrating this melting pot of skiing's grit and glamour is Alps & Meters Ski Race Knit Wasatch. Woven from a blend of cashmere and merino yarns, the Ski Race Knit Wasatch is designed with tailored fit characteristics whose fine fiber construction techniques and elevated neckline deliver a combination of warmth and sophistication. Emblazoned with a graphic expression of the storied Wasatch Mountain Range, this roll neck knitwear garment tells the story of the rags to riches narrative of Park city which revitalized itself during the early 1900s by attracting skiers from around the world to experience an luxurious snow filled atmosphere of both champagne champagne powder.

Celebrating the "greatest snow on earth", the Wasatch Mountain Range, and Park City Utah's unique embrace of alpine sport, cowgirl, and celebrity culture, the Women's Ski Race Knit Wasatch a classic piece of winter wear with form fitting characteristics and a beautifully crafted roll-neck design. Combining softly blended cashmere and merino yarns, timeless personality, and contemporary Wasatch Mountain Range graphic motif, this alpine sportswear garment commands a first class expression representing the nostalgic mining town roots and ski-fashion culture of Park City Utah USA.



Alpine Sports Club - Kandahar Ski Club

It was during the early 20th century that the men & women of polo grounds, tennis courts, and rugby pitches transitioned to the slopes, and organizations such as the Kandahar Club of the 1920's pioneered rich and sophisticated club settings in which alpine enthusiasts of both genders gathered to ski, race, hike, dine, & wine, while regaling the wonders of life in the mountains. Since their inception, Alpine Sports Clubs represented a shared set of values and united passion of alpine sport and the members of such outfits connected deeply with one another in a shared love of skiings past, present, and future. None such club has been perhaps as influential and impactful to the world of alpine sport as that of the Kandahar Ski Club. Founded in Murren, Switzerland in 1924 by passionate alpinist, Sir Alfred Lunn, the Kandahar Club and its passionate British ex-patriots are wildly credited with the creation of today's modern slalom and downhill racing formats. Equally of impact to the annals of alpine sport was the inception of the world famous *Inferno Race*. First held in January 1928, the inaugural Inferno Race took place when 19 members of Kandahar Ski Club climbed the [Schilthorn](#) (2,970m) above Murren to race down the 2,100 meters to Lauterbrunnen, 14 kilometres away. A journey of almost 10 miles (15 km) and nearly 5 times the length of contemporary downhill Olympic courses, the Inferno was an alpine event whose novelty and legitimate physical and mental obstacles, created powerful appeal to the growing racing class cut from the cloth of the Kandahar's expansive blanket of gentlemanly influence. And no better place was there to regale the stories of such a race than among the Ski Club's members whose wardrobe tastes were as sharp as the edges upon which they skied. Handsome in their attire and with a dress code reflective of their British roots, this group of sportsman were impeccably dressed and, like Alps & Meters, counted many of today's menswear garments as staples of their status and deeply held respect for alpine sport.





SCHILTHORN JACKET

Style # 500005

MADE IN ITALY



Navy

- Classic Protection**
Classic Primaloft Gold quilted zippered jacket
- Maximum Utility**
Zippered hand pockets and knitted collar for comfort and warmth
- Quality & Durability**
Wool facing outer material for natural protection from the elements.

Sizes: S, M, L, XL, XXL



Grey

While skiing's invention and inception is credited to the Scandinavians, unknown to many, is the fact that the modern racing format of the sport and its earliest formalized ski clubs were created by a group of iconoclastic Brits who loved the wind rushing and hair raising euphoria of skiing. Such was alpine sport in continental Europe when awoken to the fervor of down-hilling by Sir Arnold Lunn, a skier, mountaineer, and writer who Founded Britain's the world famous Kandahar Ski Club in 1924. Motivated by a pure downhiller's spirit combined with an attitude of constant experimentation, Lunn ultimately invented the proper slalom race format. Thereafter Lunn's Inferno Race as it would be called, became a diabolically challenge designed to test the very best skill, will, and speed of racers from the around the world. Today members of the world renowned Kandahar Club continue to host the Murren Inferno Race while regaling the deeds of its competitors much in the same spirit as conducted 100 years ago. A setting of high taste combine with a passion for the outdoors and alpine sporting achievement, the Kandahar Club itself was known as much for its ski crazed members as it was for the first class wardrobes associated with its members on and off-piste. Channeling Lunn's British roots and his alpine sports club's gentlemanly cache, Alps & Meters introduces the Schilthorn Jacket. Named after the peak from which the famed Inferno race begins, this all seasons coverall commands Italian craftsmanship, a richly baffled wool face fabric, and beautiful suede overlays exuding a high taste mixed medium of natural materials. Designed for the Gentleman Sportsman and Including the coat of arms of Murren, Switzerland, the Schilthorn Jacket is an evergreen outdoor piece celebrating of the Kandahar Club's sporting legacy and polished British origins.

SCHILTHORN VEST

Style # 500006

MADE IN ITALY



Grey

- Classic Protection**
Classic Primaloft Gold quilted zippered vest
- Maximum Utility**
Zippered hand pockets and knitted collar for comfort and warmth
- Quality & Durability**
Wool facing outer material and suede elbow patches for natural protection from the elements

Sizes: S, M, L, XL, XXL



Navy

First held in January 1928, the inaugural Inferno Race took place when 19 members of Kandahar Ski Club climbed the Schilthorn (2,970m) above Murren to race down the 2,100 meters to Lauterbrunnen, 14 kilometres away. A journey of almost 10 miles (15 km) and nearly 5 times the length of contemporary downhill Olympic courses, the Inferno was an alpine event whose novelty and legitimate physical and mental obstacles created powerful appeal to the growing racing class cut from the cloth of the Kandahar's expansive blanket of accelerating British influence. High taste, panache, and handsome sensibility describe Alps & Meters Schilthorn Vest. An garment for every season, the Schilthorn Vest commands first class Italian craftsmanship, a richly baffled wool face fabric, with signature suede trim work designed to a high taste mixed medium of natural materials. Designed for the Gentleman Sportsman and Including the Alps & Meters signature mark at left breast, the Schilthorn Vest is an evergreen outdoor piece celebrating of the Kandahar Club's sporting legacy and polished British origins.

**SPORTS CLUB
GUIDE SWEATER
CASHMERE**

Style # 100029



Camel

BOTTO GIUSEPPE CASHMERE:
Alps & Meters is using the Flair yarn which is part of Botto Giuseppe's Naturalis Fibra collection. The Naturalis Fibra collection sources from the finest Responsible Wool Standard- certified Mongolian cashmere farms and is 100% cashmere, entirely traceable, and pesticide free.

- TECHNICALLY KNITTED**
100% Italian cashmere yarn is cradle-to-cradle certified ultra-soft, temperature regulating, and naturally odor resistant.
- MAXIMUM UTILITY**
water resistant zip-secure pockets at chest and waist designed for ease of access and dry storage
- CLASSIC CONSTRUCTION**
Rich suede overlays on shoulders, placket, and chest pocket flap.
- ERGONOMIC ELBOW KNIT**
Rib-knit elbows engineered for flexibility and durability
- Sizes: S, M, L, XL, XXL



Navy

Travel to, and amidst, majestic mountain environments has offered skiers a sense of freedom and wonder since Scandinavians first strapped wooden planks to their feet in Norway during the late 19th century. During the early advent of skiing as a mode of travel and then throughout its transition to 19th and 20th century winter sport, a proper ski sweater was considered standard equipment for mountain adventures due to its technically advanced woolen fibers which offered warmth, comfortable range of motion, and natural moisture wicking characteristics. During the '50s, '60s, '70s, and '80s knitwear offered skiers a versatile expression of performance and style packaged in a traditional aesthetic born from the rich and storied heritage of alpine sport. Adopted by alpine guides within mountain locales from Aspen to Chamonix, such classic knitwear garments are respected for their heavily tried and tested characteristics delivering a unique combination winter-ready benefits. Cultivating a marriage of centuries old technologies such as 100% Italian cashmere and handsome suede leather, Alps & Meters is pleased to once again offer this proper mountain sweater as a protective homage to skiing's oldest form of outerwear and its original pioneers, guides, and alpinists.

A staple of alpine sportsmen throughout the world, the protection, comfort, and durability of a proper sweater has accompanied mountain guides since the first ascents and descents by the Scandinavians of the 19th century. Crafted with a 100% cashmere Italian yarn and combining the sturdy qualities of suede leather, the Alpine Guide Sweater is an authentic ski sweater ideal for alpine excursions and mid-layer wear occasions.

**KANDAHAR
CARDIGAN**

Style # 500002

MADE IN ITALY



Chocolate

- TECHNICALLY KNITTED**
Extra fine, tight knit, 100% merino knit provides warmth and durability
- ALPINE TRADITION**
Traditional cardigan with horn buttons and patch pockets
- ERGONOMIC ELBOW KNIT**
Italian Suede elbows engineered for durability
- TRADITIONAL ALPINE FIT**
Tailored product dimensions provide form fitting comfort
- Sizes: S, M, L, XL, XXL



Charcoal

From the grounds of Britain's posh green grass tennis courts and polo fields, migrated the cardigan sweater. Initially modeled after the woolen waist coats of British military officers of the 1800's, this original button down knitwear garment was designed with outerwear-like utility and often included rank or insignias at the left shoulder along with durable overlays of leather or waxed cotton in high wear areas. Collared to express sophistication and authority, it is no wonder that the cardigan and the officers cloaked in its handsome coverall transported such garb to the world of alpine sport at the inception of the Kandahar Club and skiing's British invasion of Murren, Switzerland during the early 20th century. Founded by Sir Alfred Lunn in 1924, the Kandahar Ski Club is responsible for the introduction and implementation of the modern slalom and downhill alpine race formats that guide such competitions today. Similarly, and perhaps equally impactful is the Kandahar's Inferno Race, a 100 year old event concocted by Lunn himself and designed as a gauntlet of sorts to challenge not only the skill but the bravery of its participants. Regaling the stories of their downhill exploits and most especially the racers of the Inferno, Kandahar members would gather in all seasons to enjoy each other's company and shared passion for the mountains. With a dress code reflective of their British roots, this group of sportsman were impeccably dressed and counted the cardigan as a wardrobe staple signaling prior military status and Kandahar Club respect. A handsome knitwear staple, Alps & Meters Kandahar Cardigan reflects the panache of skiing's original and natural wardrobe set. Primarily found off-piste, but familiar amidst the foothills of Murren where the Kandahar Club was formed, this button down sweater is crafted with 100% Italian Merino yarns, meticulous trim work, and rich suede arm panels. Designed for the Gentleman Sportsman and Including the Alps & Meters signature mark at left should, the Kandahar Cardigan is an all seasons knitwear piece celebrating of the Kandahar Club's sporting legacy and polished British origins.

24 SKI CLUB KNIT

Style # 500003

MADE IN ITALY



Grey



Navy

NEW



Ivory

TECHNICALLY KNITTED

Extra fine, 100% merino knit provides warmth and durability

ERGONOMIC ELBOW PATCHES

Italian Suede elbow patches for durability

TRADITIONAL ALPINE FIT

Tailored product dimensions provide form fitting comfort

Sizes: S, M, L, XL, XXL

Alpinists within the region of Murren, Switzerland have embraced the majesty of mountains since the early first century B.C. A center of alpine travel linking northern and southern trade routes via the storied Alps, Murren and its surrounding principalities command a rich tradition of mountain life influenced by Swiss ingenuity and its imported British & Italian taste. Of such imports, none may be as everlasting and meaningful to the world of alpine sport as that of the Kandahar Ski Club founded by British ex-patriot and alpine enthusiast Sir Alfred Lunn. With its inception dating back to 1924, the Kandahar Ski Club is responsible for the introduction and implementation of the modern slalom and downhill alpine race formats that guide such competitions today. Similarly, and perhaps equally impactful is the Kandahar's Inferno Race, a 100 year old event concocted by Lunn himself and designed as a gauntlet of sorts to challenge not only the skill but the bravery of its participants. As gallant on the race course as off, the Kandahar Ski Club's members commanded gentlemanly wardrobes of high taste and impeccable craftsmanship. Smartly dressed in conjunction with club expectations and the societal norms of the early 20th century, neatly woven pieces of knitwear were staples of preferred ensembles bringing comfort and textures to sets often including woolen trousers and coveralls such as jackets & blazers. In similar sartorial spirit and with reference to the founding year of the Kandahar Ski Club, Alps & Meters has crafted the '24 Ski Club Knit. Born of a precise and simple construction to reflect its Swiss origins and Italian workmanship, this all seasons moderate weight sweater marries with luxurious merino yarns, rich suede elbow overlays and a gentlemanly quarter zip neck-line. Versatile among formal and informal wear occasions this tailored garment is an effortless wardrobe companion for the Gentleman Sportsman making seasonal excursions to mountain villages around the world.

INFERNO ZIP

Style # 500004

MADE IN ITALY



Steel Blue



Navy

TECHNICALLY KNITTED

100% merino knit provides warmth and durability

HOODED AND ZIPPERED DESIGN

Full zip hooded sweater with zippered pockets

TRADITIONAL ALPINE FIT

Tailored product dimensions provide form fitting comfort

Sizes: S, M, L, XL, XXL

First held in January 1928, the inaugural Inferno Race took place when 19 members of Kandahar Ski Club climbed the Schilthorn (2,970m) above Murren to race down the 2,100 meters to Lauterbrunnen, 14 kilometres away. A journey of almost 10 miles (15 km) and nearly 5 times the length of contemporary downhill Olympic courses, the Inferno was an alpine event whose novelty and legitimate physical and mental obstacles created powerful appeal to the growing racing class cut from the cloth of the Kandahar's expansive blanket of accelerating British influence. High taste, panache, and handsome sensibility describe Alps & Meters Schilthorn Vest. An garment for every season, the Schilthorn Vest commands first class Italian craftsmanship, a richly baffled wool face fabric, with signature suede trim work designed to a high taste mixed medium of natural materials. Designed for the Gentleman Sportsman and Including the Alps & Meters signature mark at left breast, the Schilthorn Vest is an evergreen outdoor piece celebrating of the Kandahar Club's sporting legacy and polished British origins.

Designed to evoke the American racing legends of yesteryear and today, the Sport Club Jumper U.S. Ski Team is built with a traditional raglan sleeve construction and host of classic & contemporary custom details. True to the original jumpers and sweatshirts of the early 20th century the Sports Club Jumper U.S. Ski Team is produced with heavy gauge timeless cotton and a brushed interior for enhanced all season comfort. Built for the American alpine athlete on tour, this classic jumper provides superior comfort, temperature regulation, and protection amidst travel to and through the mountains of the FIS World Cup circuit and beyond. Adorned with a heritage logo of identity over the left breast, the Sports Club Jumper U.S. Ski Team is a staple of the Gentleman Skier's wardrobe evoking deep respect for ski racing's past while offering a garment with first class craftsmanship worthy of the amateur and professional race winners of today and tomorrow.

**SKI RACE KNIT
PATROL SPORTS
CLUB**

Style # 500008

NEW

MADE IN ITALY



MHG/Ivory



Navy/Steel Blue

TECHNICALLY KNITTED

100% Italian Cotton knit provides warmth and durability

ALPINE TRADITION

Uniform Patrol Cross graphic evokes the tradition and commitment to "service & safety" as pledged by the first patrollers of Mt. Mansfield, VT USA

ERGONOMIC ELBOW KNIT

Rib-knit elbows engineered for flexibility and durability

TRADITIONAL ALPINE FIT

Tailored product dimensions provide form fitting comfort

Sizes: S, M, L, XL, XXL

It was a frigid and snowy day in March 1938, when the race course for the National Slalom was devised on Mount Mansfield, Vermont USA. Taking stock of barren temperatures, 50 mile per hour winds, and limited visibility, Charles "Minnie" Dole, veteran of storied 10th Mountain Division and organizer of the race at hand, came to recognize that matters of precaution and safety would be required to ensure that the day's event did not end in injury for participants and spectators alike. Discussing matters with fellow race organizer, Roger Langley, at the top of the famed Nose Dive Trail the gentlemen conceived of the National Ski Patrol on the spot and thus forged a bond between racing and patrolling that has stood for almost 100 years. In fact, having ignited the spark that ignited the fire of the United States' first formal cadre of trained patrollers, it was such that many legendary competitors of that 1938 race were among the National Ski Patrol's earliest members including Dick Durrance who came to influence racing, patrolling, and resort development throughout the Rocky Mountains during the 40's and 50's. In celebration of such unity, the Alps & Meters Ski Race Knit "Patrol" sweater combines the racer's classic crewneck silhouette with the iconic uniform patrol cross creatively intertwining the stories, romance, and traditions of alpine sports founding fathers.

The Alps & Meters Ski Race Knit Patrol represents the deep and timeliness bond struck between downhill racers and ski patrollers on the fateful day of the National Slalom event held in harsh conditions on Mount Mansfield, Vermont USA in 1938. Constructed of 100% merino yarns and cut from a classic racer's crewneck silhouette, the Ski Race Knit "Patrol" prominently and proudly displays the iconic uniform patrol cross evoking National Ski Patrol Founder Charles "Minnie" Dole's passion for a mountain life dedicated to service and safety.

**W'S 24 SKI CLUB
SWEATER**

Style # 520003

NEW

MADE IN ITALY



Navy



Steel Blue

TECHNICALLY KNITTED

Extra fine, 100% merino knit provides warmth and durability

ERGONOMIC ELBOW PATCHES

Italian Suede elbow patches for durability

TRADITIONAL ALPINE FIT

Tailored product dimensions provide form fitting comfort

Sizes: XS, S, M, L, XL

Alpinists within the region of Murren, Switzerland have embraced the majesty of mountains since the early first century B.C. A center of alpine travel linking northern and southern trade routes via the storied Alps, Murren and its surrounding principalities command a rich tradition of mountain life influenced by Swiss ingenuity and its imported British & Italian taste. Of such imports, none may be as everlasting and meaningful to the world of alpine sport as that of the Kandahar Ski Club founded by British ex-patriot and alpine enthusiast Sir Alfred Lunn. With its inception dating back to 1924, the Kandahar Ski Club is responsible for the introduction and implementation of the modern slalom and downhill alpine race formats that guide such competitions today. Similarly, and perhaps equally impactful is the Kandahar's Inferno Race, a 100 year old event concocted by Lunn himself and designed as a gauntlet of sorts to challenge not only the skill but the bravery of its participants. As gallant on the race course as off, the Kandahar Ski Club's members commanded gentlemanly wardrobes of high taste and impeccable craftsmanship. Smartly dressed in conjunction with club expectations and the societal norms of the early 20th century, neatly woven pieces of knitwear were staples of preferred ensembles bringing comfort and textures to sets often including woolen trousers and coveralls such as jackets & blazers. In similar sartorial spirit and with reference to the founding year of the Kandahar Ski Club, Alps & Meters has crafted the '24 Ski Club Knit. Born of a precise and simple construction to reflect its Swiss origins and Italian workmanship, this all seasons moderate weight sweater marries with luxurious merino yarns, rich suede elbow overlays and a gentlemanly quarter zip neck-line. Versatile among formal and informal wear occasions this tailored garment is an effortless wardrobe companion for the Gentleman Sportsman making seasonal excursions to mountain villages around the world.



Originals

Alps & Meters was founded with a mission to uphold the classic traditions of alpine sport. A mode of winter transportation turned mountain recreation, the centuries old activity of skiing commands a rich legacy of memories and stories the world over. Passed from generation to generation this activity and its album of alpine experiences have been woven to create a tapestry of timeless tradition that continues today in bastions of skiing's origins such as St. Moritz, Aspen, Chamonix, Sun Valley, Vail, Zermatt, Courchevel, Jackson Hole, Soelden, and Park City. One of a kind destinations all, such resorts of the late 19th and early 20th centuries were then populated with equally handsome wardrobes that combined the high street fashions of the day with novel elements of protection. Full of originality, nostalgia, and crafted from tried & true old world fibers and fabrics, the garments of skiing's era of inception exuded an exquisite expression of high taste form & function. As much an expression of its time-honored values as it is a commitment to long-forgotten quality, Alps & Meters' Originals Collections houses the brand's very first products of traditional alpine sportswear. Classic, tailored & technical, and evoking the romance of alpine sport's past, Alps & Meters' Originals capture the essence of the brand's identity and convictions packaged within products of exceptional care & workmanship.





ALPINE ANORAK

Style # 100004



Fatigue



Navy

WAX SEALED

British Millerain® water repellent, waxed canvas construction.

CLASSIC PROTECTION

Helmet compatible hood and classic front lace closure with face guard for enhanced wind protection.

CUT FOR COMFORT

Underarm venting provides ventilation.

DRY & PROTECTED

Interior 10k/10k waterproof membrane and draw cord waist.

QUALITY & DURABILITY

Reinforced, waxed canvas shoulder panels for sturdy wear

Sizes: S, M, L, XL, XXL

The storied 10th Mountain Division of the United States Army was originally commissioned as the 10th Light Alpine in 1943. Initially conceived by Charles Minot Dole, President of the National Ski Patrol, and trained at Camp Hale, Colorado USA by mountaineer Jim Whitaker, the first American to summit Mount Everest, the 10th was the first elite skiing force of its kind focused upon winter and mountain combat during WWII. Contributing to the end of the war through victories achieved in the Italian Alps and amidst harsh, snow-filled terrain, the 10th Mountain Division's intense requirements for protection and performance lead to the War Department's technical design and development of the Alpine Anorak as its standard issue "jacket." Chosen for its pull-over characteristics reducing wind bleeding often incurred through a front placket zipper, the full body coverage and hooded construction leveraged the centuries old design knowledge of the native Inuits of Canada and Greenland who favored those same protective characteristics when crafting their garments from stretched animal skins and water repellent oils. With reference and deference to the durable all-terrain winter performance garment of the 10th Mountain Division, Alps & Meters introduces the Alpine Anorak. A storied piece made famous by the best of men from the famed 10th, the Alpine Anorak delivers snow, wind, and water resistant protection through a combination of classic and contemporary technologies. A timeless, tested, and authentic winter garment, the Alpine Anorak is designed to delivering exceptional quality and comfort while upholding the classic alpine traditions of the past.

Long lasting wear produces long lasting memories. This statement aptly describes the creative ethos of the Alps & Meters Alpine Anorak. Modeled on the historic, fortified garments of similar design worn by the United States 10th Mountain Division Alpinists, the piece resonates with an authentic expression of winter performance. Constructed by the British Millerain Co. LTD, creators of performance fabrics since the late 1800's, the rich waxed cotton body belies a 200 year old technology that offers classic on-mountain protection and vintage style for the Gentleman Skier seeking classic protection and first class craftsmanship.

ALPINE WINTER TROUSER

Style # 100003



Grey



Chocolate

QUALITY & DURABILITY

Full grain, waterproof leather boot panels.

CLASSIC PROTECTION

Warm, herringbone wool-blend shell fabric with water repellent coating.

CUT FOR COMFORT

Inseam, mesh-lined, zippered thigh vents regulate temperature.

DRY & PROTECTED

Interior 10k/10k waterproof membrane and elastic boot gaiters.

MAXIMUM UTILITY

Right leg pocket for easy access and dry storage.

TRADITIONAL ALPINE FIT

Back leg zippers close for tapered après-ski profile.

Sizes: S, M, L, XL, XXL

During the late 19th century, British Tailor John Redfern launched a house of couture which produced the world's first garments designed for sporting activities. The sensibilities of Redfern garnered the patronage of British and European royalty which catapulted the taste and texture of the classic trouser beyond its old military origins to an article of clothing committed to both exceptional comfort and sartorial self-expression. Redfern's position as the luxury sportswear label of the era commanded influence far and wide across the European continent and shaped the 20th century aesthetic of skiwear. During the 1920's and post World War era the convergence of function and fashion as purported by the House of Redfern gave birth to advanced wintersport clothing which was adopted by the skiers of the age. Catering to those well-to-do jet setters and winter sport enthusiasts of the Alps, the proper ski trouser's slim proportions, natural wool material complexion, and panache of herringbone and tweed presentations revealed respect for original features of military mountain performance such as a tapered cut and adjustable suspender kit while also adhering to the high street fashions of Paris, London, and New York. Traditional and contemporary with deference to the tailored craftsmen of winter sport's past, Alps & Meters Alpine Winter Trousers is a first class product designed with a combination of classic quality and protective technologies. A Forged Performance staple of the Gentleman Skiers wardrobe, the Alpine Winter Trousers is a nostalgic ski pant infused with timeless and technical attributes delivering maximum comfort, warmth, and durability for winter sport recreation.

There is refinement and functional beauty found in the cut & sew complexion of a properly tailored pant. The choice of fabric, materials, and construction techniques, when treated with care, delivers not only performance comfort but a romantic expression of the timeless nature of alpine sport. A bonded wool blend and a unique mix of protective technologies make this style a powerful combination of the past and present. Classic and contemporary, the Alpine Winter Trousers is a product designed by tradition.

ALPINE GUIDE SWEATER

Style # 100005



Sky



Chili Pepper

NEW



Charcoal



Grey



Navy

TECHNICALLY KNITTED

80/20 lambswool-nylon yarn is ultra-soft, temperature regulating and naturally odor resistant.

MAXIMUM UTILITY

Water resistant zip-secure pockets at chest and waist designed for ease of access and dry storage.

QUALITY & DURABILITY

Reinforced British Millerain® waxed canvas shoulder panels for sturdy wear.

ERGONOMIC ELBOW KNIT

Ribbed elbow designs engineered for flexibility and durability.

Sizes: S, M, L, XL, XXL

Travel to, and amidst, majestic mountain environments has offered skiers a sense of freedom and wonder since Scandinavians first strapped wooden planks to their feet in Norway during the late 19th century. During the early advent of skiing as a mode of travel and then throughout is transition to 19th and 20th century winter sport, a proper ski sweater was considered standard equipment for mountain adventures due to its technically advanced woolen fibers which offered warmth, comfortable range of motion, and natural moisture wicking characteristics. During the '50s, '60s, '70s, and '80s knitwear offered skiers a versatile expression of performance and style packaged in a traditional aesthetic born from the rich and storied heritage of alpine sport. Adopted by alpine guides within mountain locales from Aspen to Chamonix, such classic knitwear garments are respected for their heavily tried and tested characteristics delivering a unique combination winter-ready benefits. Cultivating a marriage of centuries old technologies such as dense lambswool and waxed cotton, Alps & Meters is pleased to once again offer this proper mountain sweater as a protective homage to skiing's oldest form of outerwear and its original pioneers, guides, and alpinists.

A staple of alpine sportsmen throughout the world, the protection, comfort, and durability of a proper sweater has accompanied mountain guides since the first ascents and descents by the Scandinavians of the 19th century. Crafted with a triple-ply merino yarn and combining the sturdy qualities of waxed cotton, the Alpine Guide Sweater is an authentic ski sweater ideal for alpine excursions and mid-layer wear occasions.

SKI RACE KNIT PATROL

Style # 100022



Black/Red

NEW



Navy



Charcoal



Grey/Chili

TECHNICALLY KNITTED

Extra fine, tight knit, 100% merino knit provides warmth and durability

ALPINE TRADITION

Uniform Patrol Cross graphic evokes the tradition and commitment to "service & safety" as pledged by the first patrollers of Mt. Mansfield, VT USA

ERGONOMIC ELBOW KNIT

Rib-knit elbows engineered for flexibility and durability

TRADITIONAL ALPINE FIT

Tailored product dimensions provide form fitting comfort

Sizes: S, M, L, XL, XXL

It was a frigid and snowy day in March 1938, when the race course for the National Slalom was devised on Mount Mansfield, Vermont USA. Taking stock of barren temperatures, 50 mile per hour winds, and limited visibility, Charles "Minnie" Dole, veteran of storied 10th Mountain Division and organizer of the race at hand, came to recognize that matters of precaution and safety would be required to ensure that the day's event did not end in injury for participants and spectators alike. Discussing matters with fellow race organizer, Roger Langley, at the top of the famed Nose Dive Trail the gentlemen conceived of the National Ski Patrol on the spot and thus forged a bond between racing and patrolling that has stood for almost 100 years. In fact, having ignited the spark that ignited the fire of the United States' first formal cadre of trained patrollers, it was such that many legendary competitors of that 1938 race were among the National Ski Patrol's earliest members including Dick Durrance who came to influence racing, patrolling, and resort development throughout the Rocky Mountains during the 40's and 50's. In celebration of such unity, the Alps & Meters Ski Race Knit "Patrol" sweater combines the racer's classic crewneck silhouette with the iconic uniform patrol cross creatively intertwining the stories, romance, and traditions of alpine sports founding fathers.

The Alps & Meters Ski Race Knit Patrol represents the deep and timeliness bond struck between downhill racers and ski patrollers on the fateful day of the National Slalom event held in harsh conditions on Mount Mansfield, Vermont USA in 1938. Constructed of 100% merino yarns and cut from a classic racer's crewneck silhouette, the Ski Race Knit "Patrol" prominently and proudly displays the iconic uniform patrol cross evoking National Ski Patrol Founder Charles "Minnie" Dole's passion for a mountain life dedicated to service and safety.

**W's SKI RACE
KNIT PATROL**

Style # 120010



Grey

BOTTO GIUSEPPE CASHMERE:

Alps & Meters is using the Flair yarn which is part of Botto Giuseppe's Naturalis Fibra collection. The Naturalis Fibra collection sources from the finest Responsible Wool Standard- certified Mongolian cashmere farms and is 100% cashmere, entirely traceable, and pesticide free.

TECHNICALLY KNITTED

Heavy gauge, tight knit, 100% Italian cashmere provides warmth and durability.

ALPINE TRADITION

Uniform Patrol Cross graphic evokes the tradition and commitment to "service & safety" as pledged by the first female patrollers Ergonomic Elbow Knit: ribbed elbow designs engineered for flexibility and durability.

TRADITIONAL ALPINE FIT

Tailored product dimensions provide form fitting comfort.

Sizes: XS, S, M, L, XL



Desert **NEW**



Navy



Ivory/Merlot



Black

Three years after the inception of the National Ski Patrol in 1938, the group dedicated mountain "service & safety" welcomed its first female member, Dorothy McClung. A member of the San Diego Ski Club, Dorothy McClung was a natural athlete and was appointed to the Ski Patrol after just four years on skis. A formidable and powerful racer within the Southern California event circuit, Dorothy gained recognition and notoriety when she and five other members of the San Diego Ski Club (all male) skied into Cuyamaca Peak to deliver 150 pounds of food and nourishment to stranded Rangers whose job it was to scan the skies for enemy aircraft during the height of World War II. First a member of the San Diego Ski Patrol, the original organization of its kind in California, through her skiing prowess and exploits such as the on Cuyamaca Peak, Dorothy was honored as female patroller #1 among an existing group of 500 men. In celebration of Dorothy's pioneering spirit and in tribute to the women who have followed in her footsteps, Alps & Meters has designed the W's Ski Race Knit "Patrol" Cashmere. Woven of 100% Italian cashmere yarns and emblazoned with the iconic uniform patrol cross, a signature of ski patrol outfits throughout the world, the W's Ski Race Knit "Patrol" Cashmere celebrates Women's racing and patrolling exploits throughout the history of alpine sport.

A celebration of Women's first racing and patrolling exploits, the W's Ski Race Knit Patrol Cashmere evokes the pioneering spirit of the National Ski Patrol's first female patroller, Dorothy McClung, and those who have followed in her footsteps in a life dedicated to service and safety in the mountains. Emblazoned with the iconic uniform patrol cross, the W's Ski Race Knit Patrol is woven from 100% Italian cashmere yarns in a class crewneck silhouette ideal for the female alpinist on and off-piste.

**W's SKI RACE
KNIT OLYMPIC**

Style # 120002



Grey

Charcoal

TECHNICALLY KNITTED

70% super-fine merino 30% cashmere yarns blended for softness, form-fitting comfort and lasting durability.

FIT FOR WARMTH

High collar and fitted cuffs for additional comfort.

ALPINE TRADITION

Classic intarsia knit inspired by alpine sport heritage.

DRY & PROTECTED

Natural yarn body offers moisture wicking and temperature regulation

Sizes: XS, S, M, L, XL



Navy



Chocolate

NEW

Initially a form of recreation reserved for men, ski racing's romance and elegance came into clear view in 1931 during the first unofficial FIS World Alpine Championships and then again in 1948 during the V Winter Olympics in St. Moritz, Switzerland. 1931 marked Esme MacKinnon's British victories in the downhill and slalom, the first for any woman and a resounding transformation of a sport finally graced and refined by female precision, style, and aplomb. Seventeen years later, inspired by MacKinnon, women compete in their first alpine skiing events of the '48 Winter Olympiad and names such as Hedy Schlunegger of Switzerland, Gretchen Fraser of the United States, and Trude Beiser of Austria, would be awarded the first gold medals in the Downhill, Slalom, and Combined events respectively. Since the pioneering turns of the first half of the 20th century women's elegance, power, and style has imprinted itself on the world of alpine sport. Such values have subsequently demanded unique sportswear presentations of composed of equal parts personality, comfort, and self-expression. Form fitting and offering high visibility and graphic recognition for spectators viewing from afar, the Ski Race Knit is a staple of the winter sportswomen's wardrobe. Comfortable and protective, with elements of properly knitted fiber construction and a rich yarn complexion, Alps & Meters' Ski Race Knit conveys a story of alpine sports' first racing personalities, their passion for skiing, and their highly fashionable taste on and off the mountain.

With a point of origin related to proper European ski race sweaters worn by pioneering female slalom enthusiasts, the Women's Ski Race Knit is a traditional piece of mountain-wear with form fitting characteristics and a Forged Performance material complexion. Combining softly blend yarns, total comfort, and traditional personality, this alpine sportswear garment commands a first class expression representing the pure romance of ski racing from both the past and present.

**ALPINE
RUCKSACK**
Style # 400001



Raven

QUALITY & DURABILITY

Constructed with rugged Halley Stevensons® waxed canvas from Scotland and premium waterproof Tata® leather

MAXIMUM UTILITY

30 liter interior including safety gear pocket for shovel-handle-probe with room to spare for goggles, helmet and other gear

INTEGRATED HYDRATION

Convenient back panel pocket accommodates bladder with tube routing system in shoulder strap

CARRYING COMFORT

Contoured, padded shoulder straps and padded back panel provide all-day comfort

DRY & PROTECTED

Completely water resistant material and construction safely stores and protects your gear

ERGONOMIC DESIGN

Side straps enable balanced vertical ski carry provide balanced side

DESIGNED FOR SAFETY

High visibility, emergency orange lining with reflective logos and signal whistle on sternum strap

Since the advent of skiing, travel to and within majestic mountain settings has always involved the necessity of sound route planning and preparation. During the 1800s, Nordic skiers undertook tours from village to village in a spirit of exploration and trade. Then, and now, supplies, safety provisions, and a change of clothes were packed away in protective carry-alls to aid round trip journeys that might span a week or more. To assist such alpine adventures Alps & Meters has created the Alpine Rucksack, an alpine essential designed of rugged waxed canvas and leather, highly considered elements of ergonomic construction, and multi-day storage capacity. Whether traveling between the Northern and Southern hemispheres in search of endless winter or hiking and skiing amidst Rockies, Andes, Alps of Europe, or the Alps of New Zealand, the Alpine Rucksack is a worthy and dependable companion to the alpinist seeking global travel and adventure in mountains around the world.

A rugged and handsome alpine accessory, the Alpine Rucksack is a high performance pack, well equipped to handle the challenges of the mountains. Forged from heavy-duty waxed canvas and leather, and featuring water resistance and contoured shoulder straps, this is a piece designed to provide alpinists with a well-crafted and traditional alternative to the modern pack.

**DOWNHILL
DUFFLE**
Style # 400002



Raven

QUALITY & DURABILITY

Constructed with rugged Halley Stevensons® waxed canvas from Scotland and premium waterproof Tata® leather

MAXIMUM STORAGE CAPACITY

190 cm length, 55 liter length-wise volume and full length 2-zipper entry/exit

CARRYING COMFORT

Contoured, padded shoulder strap with antique brass hinges and 3 reinforced handles available for carrying versatility

DRY & PROTECTED

High durability, anti-tear, and fully padded dry compartment interior

Since the advent of skiing, militaries and travelers alike have relied upon durable carry-alls to transport goods to and through the mountains. From the town of Duffel in Belgium where the canvas cloth synonymous with such pack-alls was first woven in the 17th century, the duffle bag became a standard issue among the troop movements of WWI and WWII. The cylindrical shape was adopted for its simple but voluminous construction and versatile mode of carry as either a hand-held bag or backpack. Made popular by returning U.S. soldiers turned skiers and ski patrollers who favored its rugged durability and transport capabilities during the Rocky Mountains skiing boom of the 1950s, the duffle was adopted into ski culture shortly thereafter when its purposeful fabric and smart, spacious design was discovered to perfectly accommodate skis, poles, and various sundry gear required for alpine sport and winter recreation. Recognizing the timeless qualities and maximum utility of original duffles embraced by the American West's military veterans and skiing pioneers, Alps & Meters introduces the Downhill Duffle. A companion to the equally rugged and sophisticated Alpine Rucksack, the Downhill Duffel is a ski bag born from a bygone era of craftsmanship where the use of heavy gauge canvas and full grain leathers produced packs, bags, and carry-alls that were built to last. Ideal for the Gentleman Sportsman recreating among mountains abroad, the Downhill Duffel's traditional cylindrical design accommodates all necessary equipment for a 7-day excursion while its Forged Performance material complexion ensures total protection of contents within while delivering long-lasting durability.

The Alps & Meters Downhill Duffle is a Forged Performance ski bag built with timeliness characteristics and maximum durability for the Gentleman Skier on tour to and through the mountains. A combination of durable waxed cotton from the storied Halley Stevenson mill of Scotland and full grain waterproof leather, the traditional design of the Downhill Duffel references original military carry-alls of similar cylindrical shape made standard issue by the United States 10th Mountain Division for purposes of mountain travel above the alpine. Voluminous and built to last, the Downhill Duffel marries with Alps & Meters Alpine Rucksack to provide a considered and crafted luggage ensemble ideal for winter pursuits around the world.

W MONARCH JACKET
LORO PIANA
320013



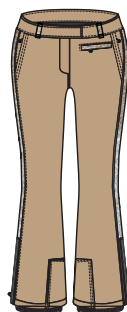
DESERT/LEATHER

W STERLING JACKET
LORO PIANA
320014



DESERT/DESERT

W TWENTIES TROUSER
LORO PIANA
320015



DESERT/CAMO

W SCHILTHORN VEST
LORO PIANA
320012



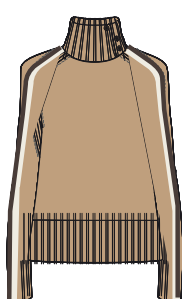
CAMO

W NORDEN KNIT
ITALIANA
320009



DESERT/BROWN/IVORY

W SKI RACE KNIT DOWNHILL
ITALIANA
320017



DESERT/BROWN/IVORY

W STERLING FLANNEL
LORO PIANA
320011



DESERT CHECK

W SKI RACE KNIT
WASATCH
120015



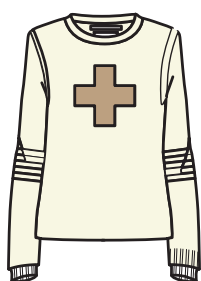
DESERT/BROWN/IVORY

W CABLE 8'S SWEATER
120001



IVORY

W SKI RACE KNIT
PATROL CASHMERE
120010



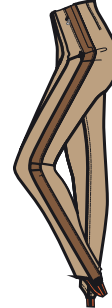
IVORY/DESERT

W SKI RACE KNIT
OLYMPIC
120002



BROWN/IVORY/DESERT

W STERLING LEGGING
320010



DESERT/LEATHER



W ASCENT SHELL
320003



MERLOT

W ASCENT SHELL
320005



FORGED STONE

W ASCENT BIB
320006



MERLOT

W ASCENT BIB
320006



BLACK

W ASCENT GUIDE JUMPER
120026



CHARCOAL

W ASCENT GUIDE JUMPER
120026



IVORY

W SKI RACE KNIT
PATROL CASHMERE
120010



IVORY/MERLOT

W SKI RACE KNIT
PATROL CASHMERE
120010



MGH/IVORY

W SKI RACE KNIT
PATROL CASHMERE
120010



BLACK/IVORY

W SKI RACE KNIT
OLYMPIC
120010



CHARCOAL

W SKI RACE KNIT WASATCH
120015



CHARCOAL

W SKI RACE KNIT WASATCH
120015



MERLOT



W CODY POWDER 8 JACKET
120036



NAVY/GREEN

W CODY POWDER 8 JACKET
120036



NAVY/BLUE

W POWDER 8 PANT
120037



GREEN/NAVY

W POWDER 8 PANT
120037



NAVY/BLUE

W POWDER 8 JUMPSUIT
120035



NAVY

W SKI RACE KNIT OLYMPIC
120038



NAVY/BLUE

W CABLE 8'S SWEATER
120001



NAVY

W CABLE 8'S SWEATER
120001



BLUE

W POWDER 8 KNIT
120040



YELLOW

W POWDER 8 KNIT
120040



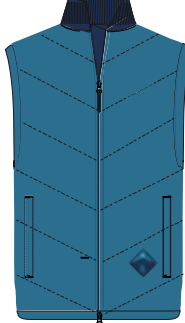
NAVY

W POWDER 8 VEST
120038



NAVY

W POWDER 8 VEST
120038



NAVY



ALPINE OUTRIG JACKET
LORO PIANA
300014



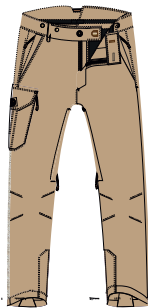
DESERT/LEATHER

DOWNHILL '27 JACKET
LORO PIANA
300015



DESERT/DESERT

ALPINE WINTER TROUSER
LORO PIANA
300016



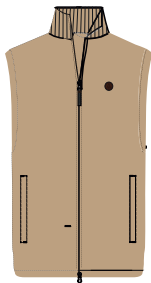
DESERT

SCHILTHORN JACKET
LORO PIANA
300011



DESERT/LEATHER

SCHILTHORN VEST
LORO PIANA
300012



DESERT

NORDEN KNIT
ITALIANA
300010



DESERT/BROWN/IVORY

SKI RACE KNIT 1905
ITALIANA
300017



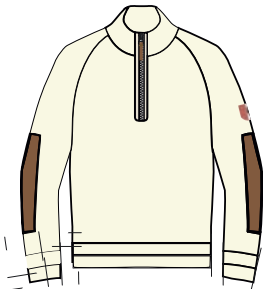
DESERT/IVORY/BROWN

WINTER FLANNEL
LORO PIANA
300013

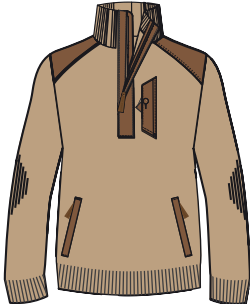


BROWN CHECK

'24 SKI CLUB SWEATER
500003



ALPINE GUIDE SWEATER
CASHMERE
100029



KANDAHAR CARDIGAN
500002



HIGH WEST TURTLENECK
100037



ASCENT SHELL
100048



CHILI PEPPER

ASCENT SHELL
100048



FORGED STONE

ASCENT BIB
100050



CHILI PEPPER

ASCENT BIB
100050



BLACK

ASCENT TROUSER
100051



FORGED STONE

SKI RACE KNIT PATROL
500008



BLACK/CHILI PEPPER

SKI RACE KNIT PATROL
500008



MGH/CHILI PEPPER

ALPINE GUIDE SWEATER
100005



CHILI PEPPER/BLACK

ALPINE GUIDE SWEATER
100005



CHARCOAL

KANDAHAR CARDIGAN
500002



CHARCOAL

HIGH WEST WINTER FLANNEL
100067



RED

HIGH WEST WINTER FLANNEL
100067



BLACK



SCHILTHORN VEST
500006



NAVY

ASCENT BIB
100050



NAVY

ASCENT SHELL
100048



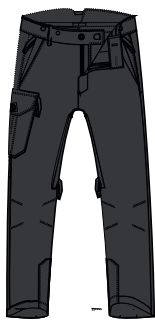
NAVY

ASCENT GUIDE PULLOVER
100053



NAVY

ALPINE WINTER TROUSER
300016



CHARCOAL

ALPINE GUIDE SWEATER
100005



NAVY

ALPINE GUIDE SWEATER
HIGH WEST
100035



IVORY

ALPINE GUIDE SWEATER
HIGH WEST
100035



IVORY

HIGH WEST WINTER FLANNEL
100067



NAVY

SKI RACE KNIT PATROL
500008



NAVY/IVORY

24 SKI CLUB SWEATER
500003



GREY

24 SKI CLUB SWEATER
500003



NAVY













General Importer for:
Switzerland, Germany, Austria and Italy

Sales Germany/Austria & Italy

Peter Schaumlechner
PPS Sportsgoods AG
Hinterbergstrasse 24
6312 Steinhausen
Mobile: +41 79 439 19 49
Office: +41 41 783 83 83
peter@pps-sportsgoods.com
pps-sportsgoods.com